

At the Intersection of Active Transportation & Equity



Sara Zimmerman, JD
Technical Assistance Director



What's the Goal?

Making our communities safe, healthy, and fair across racial and income lines



Overview of Transportation Inequities



Deaths & injuries

Higher rates of death: by income

People Killed While Walking by Income



Governing, August 2014

Higher rates of death: race

By race

By income

For walking

For bicycling

For adults

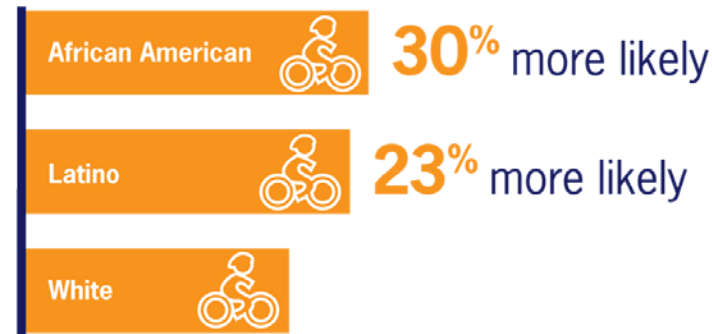
For children

People Killed While Walking



Governing, August 2014

People Killed While Bicycling



Centers for Disease Control and Prevention, 2001

Higher injury rates: by income

Low-income census tracts versus upper-income tracts

People on foot: 6.3x higher

People bicycling: 3.9x higher

People in cars: 4.3x higher

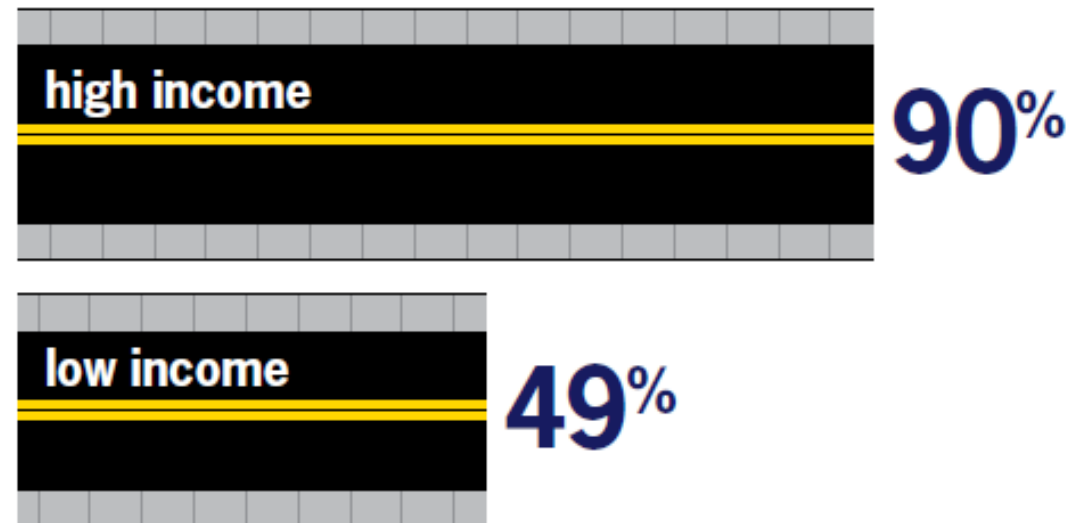


Physical Environment for Walking & Biking



Research shows

Communities with Sidewalks

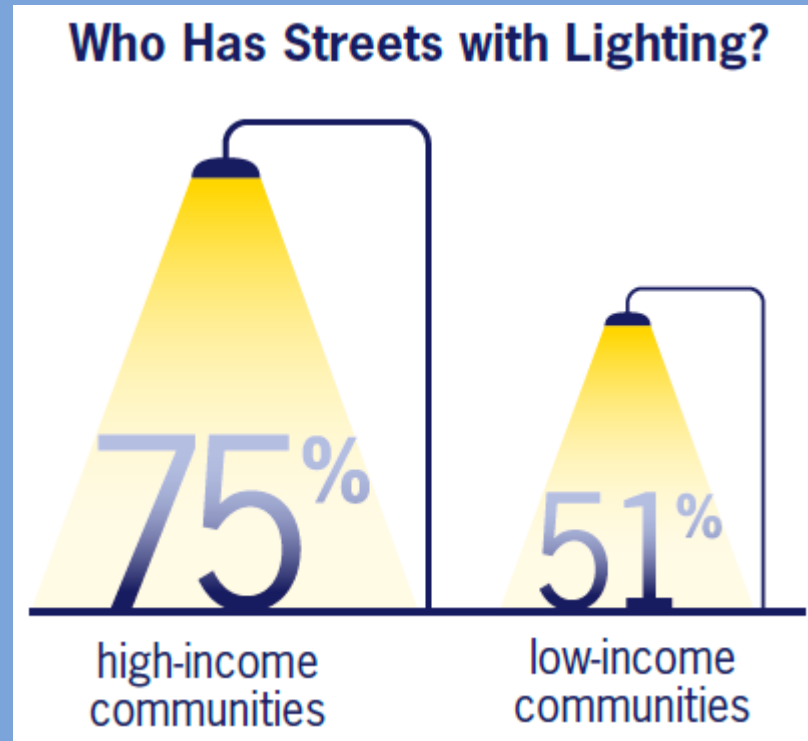


Bridging the Gap, *Income Disparities in Street Features that Encourage Walking*, 2012





Research shows



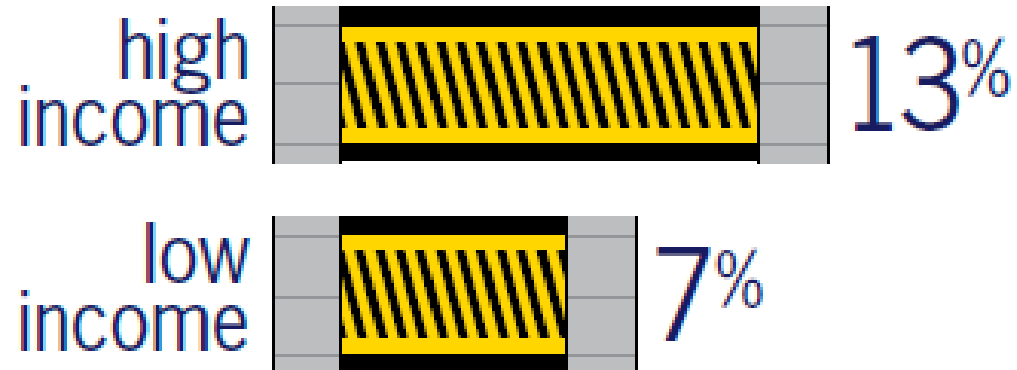
Bridging the Gap, *Income Disparities in Street Features that Encourage Walking*, 2012





Research shows

Communities with Marked Crosswalks



Comfort and Attractiveness

Where would YOU rather walk or bicycle?



Experiences While Walking & Biking

Racial Profiling

- Stop and frisk often happens when people are walking
- Police target bicyclists of color
- Walking & biking movement have traditionally seen this as a racial justice problem
- Time to take this issue on & be real allies

“It reduces your self-confidence. It’s no different than getting robbed. Getting put up against a wall, it’s no different than someone stealing your stuff. It can be traumatizing. For the police, they let you go, it’s no harm, no foul. But it can make children feel the community has given up on their chance to be successful.”

Gemar Mills

Principal of Malcolm X Shabazz High School, Newark, NJ

Crime & violence

- Significant issue in many communities
- Endangers people when they walk or bicycle
- People restrict walking, bicycling, and outdoor activities due to fear of crime



A photograph of a street scene. In the background, there is a brick wall covered in graffiti, including the letters 'AMC' and a large ampersand. A black trash can stands on a sidewalk next to a chain-link fence. In the foreground, a crosswalk with white stripes and yellow tactile paving is visible. A black and white bollard is positioned on the sidewalk. A blue text box is overlaid on the bottom left of the image.

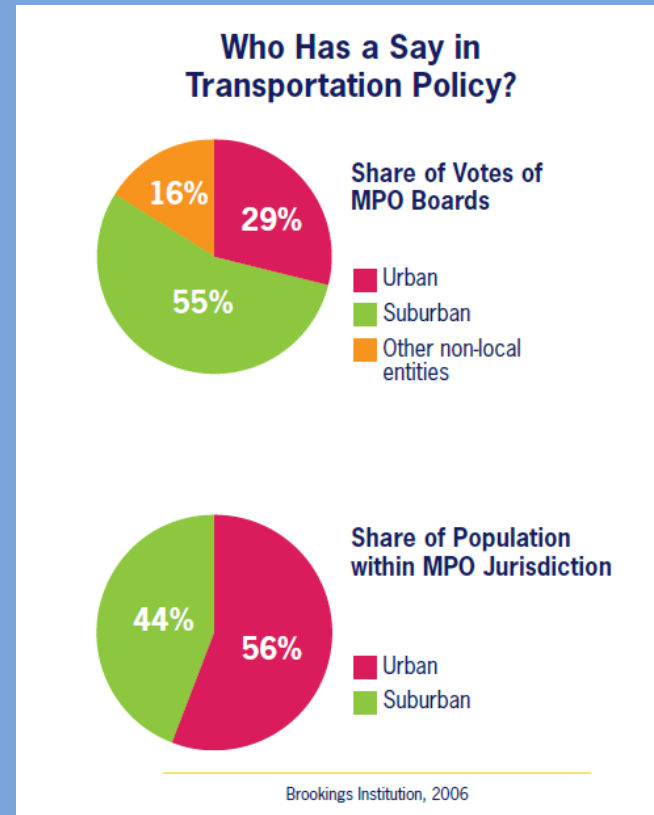
Additional issues

- Slurs, harassment, & microaggressions
- Discriminatory treatment by drivers

What Can Be Done? Transportation Planning, Policies, and Investments

Equity in transportation funding

- **Direct transportation funding** to underinvested, high need communities
- **Look at barriers:** provide outreach, TA, application assistance, matches, address challenges in cost reimbursement grants
- **Local government policies** need to prioritize investments for low income areas: comprehensive plans, bike/ped plans



Equity in policies between communities

- Zoning & subdivision codes
- Complete streets policies?



Bridging the Gap, *Using Local Land Use Laws to Facilitate Physical Activity*, 2012

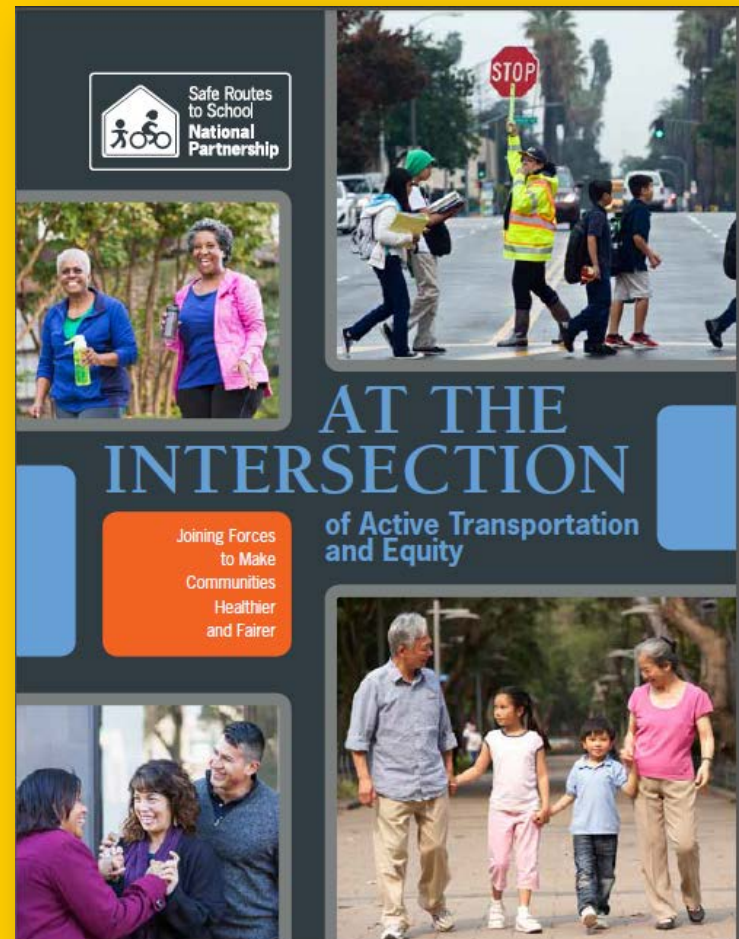


Other Key Policy Areas at the Intersection

- Gentrification & displacement
- School siting & access to quality education
- Relationship with law enforcement – racial profiling; traffic tickets; vision zero
- Support for public transit

Report

- Assembles data to demonstrate that walking and bicycling are an equity issue
- Explores complex issues at this intersection
- Urges collaboration for healthier communities and more success for the active transportation movement & social justice movement



www.saferoutespartnership.org/publications



Safe Routes
to School
**National
Partnership**

Sara Zimmerman

Technical Assistance Director

sara@saferoutespartnership.org

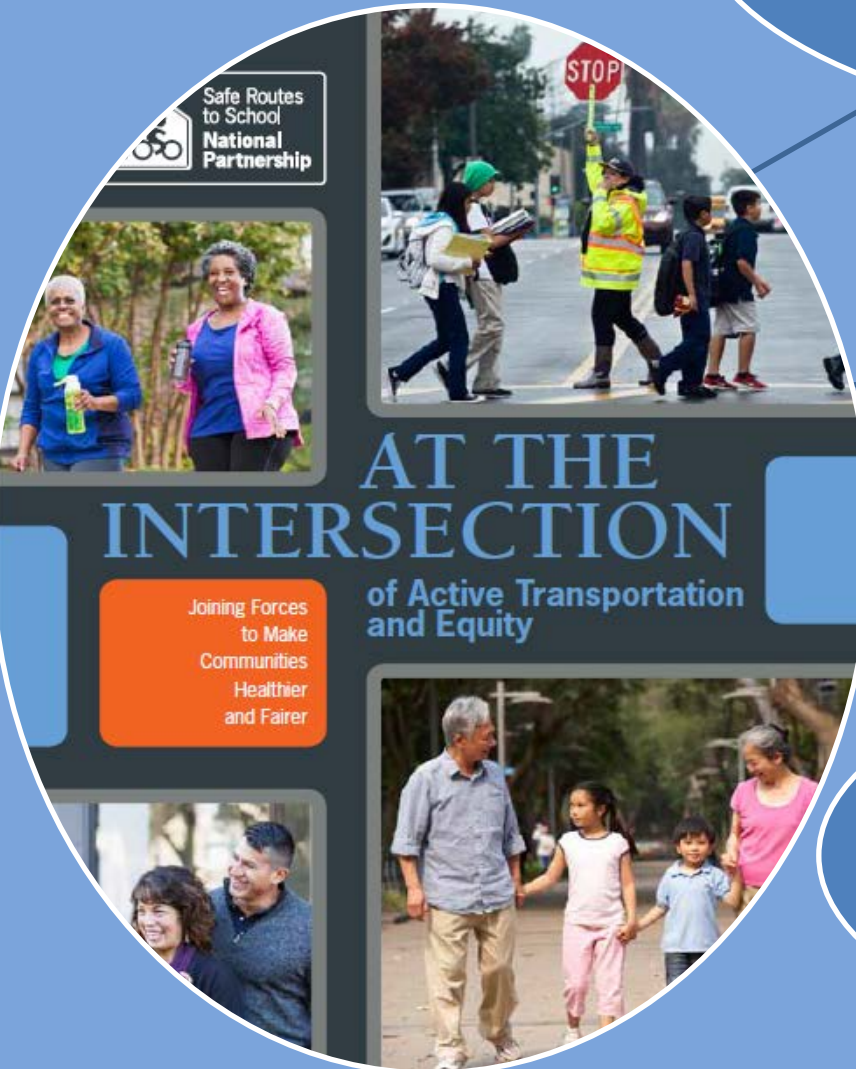


Three key takeaways

Active transportation already is an equity issue

Embrace the larger goals of potential partners – be a real ally on displacement, police brutality, etc.

Collaboration & partnerships will make us stronger



Lessons

If you work on social justice & equity issues: Active transportation is part of your bailiwick.

If you work on active transportation:

Reach out & partner with equity groups. Take these issues on, educate yourself, and do good work.

If you work on equitable active transportation:

Keep it up; look for new opportunities and greater clarity on challenges and areas of work.

