



Colorado Info Session

November 1, 2023



Staff Introductions



Vanessa Cascio
Program and Policy Manager



Natasha Riveron
Healthy Parks and Places Manager



Marisa Jones
Policy and Partnerships Director



Info Session Agenda

- Background
 - What is Safe Routes to Parks?
 - Our Approach
 - Program Goals
 - CO's Safe Routes to Parks Initiative
- About the Program
 - Program Strategies
 - Eligibility
 - Expectations
 - Timeline
- Q & A

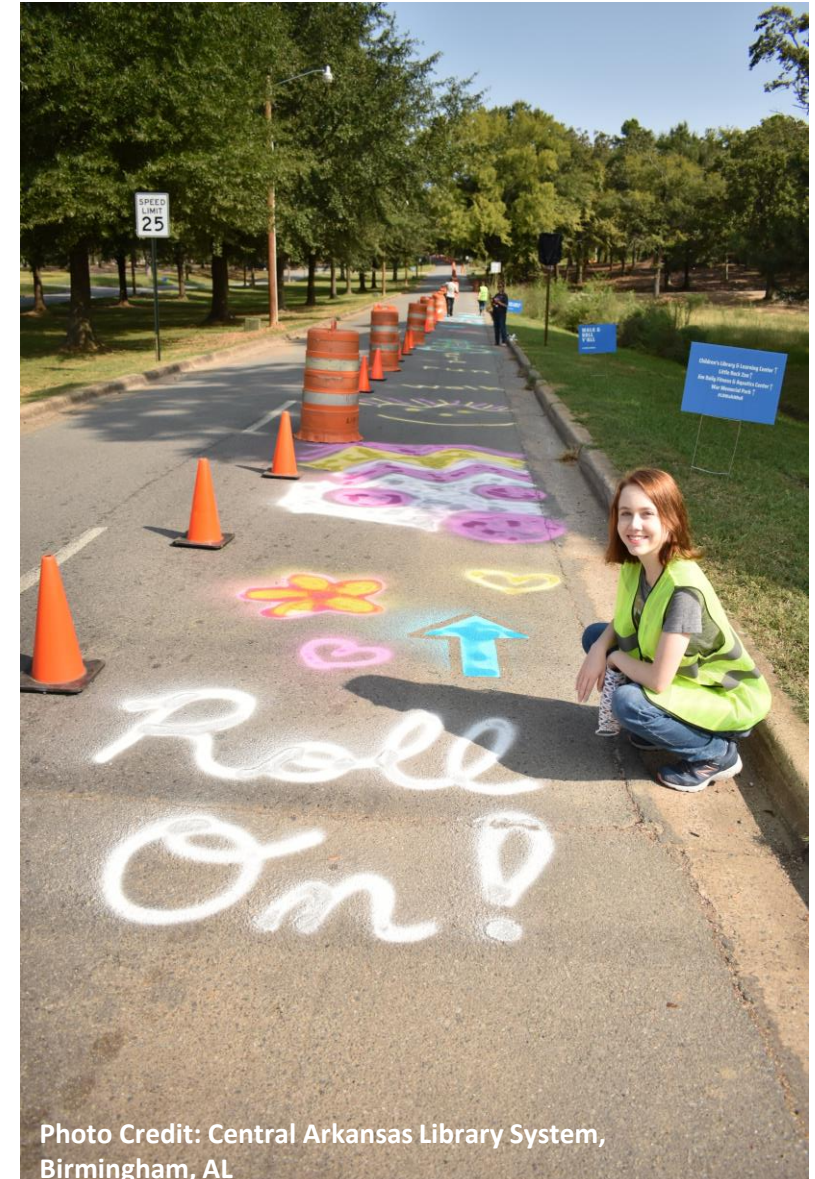


Photo Credit: Central Arkansas Library System, Birmingham, AL





SAFE ROUTES TO PARKS ACTVATING COMMUNITIES

What is Safe Routes to Parks?

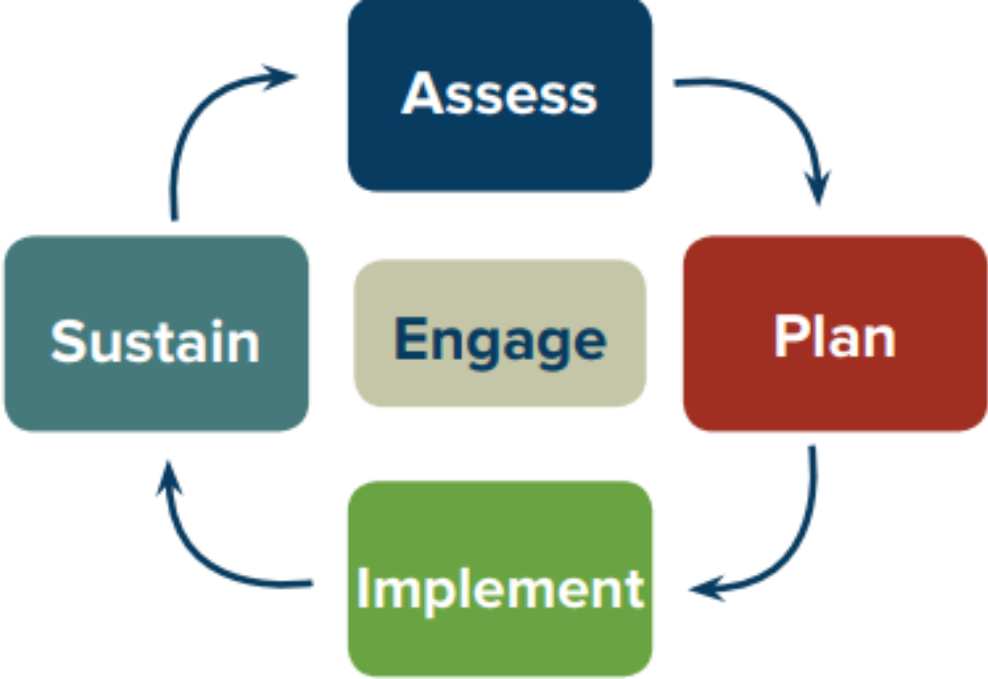
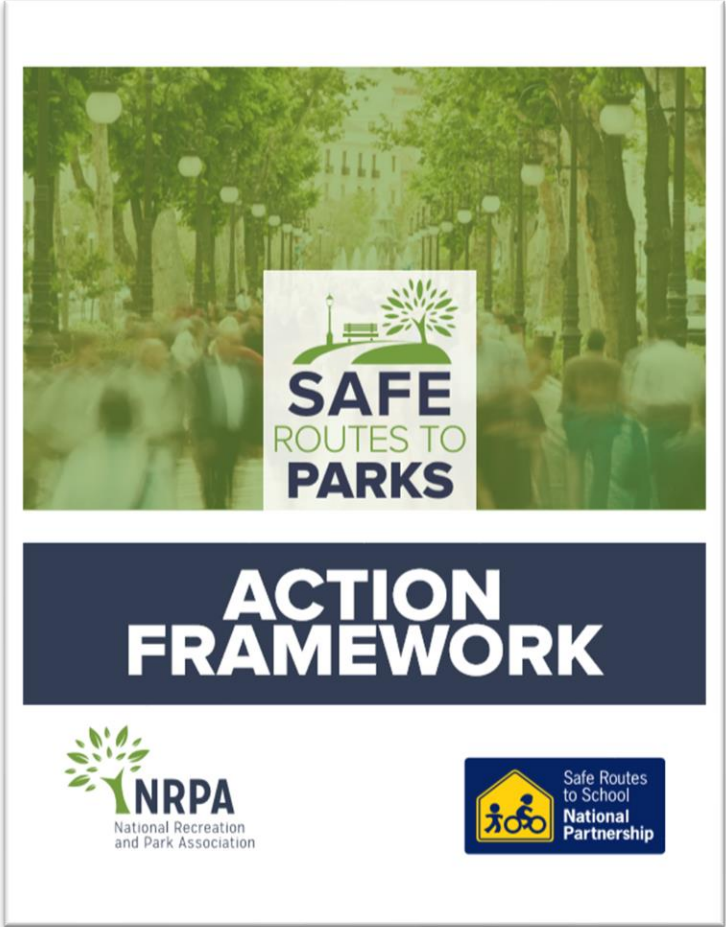


Safe Routes to Parks is a movement to make access to great parks safer, more convenient, and more equitable for people walking, biking, and taking public transportation.



SAFE ROUTES TO PARKS ACTIVATING COMMUNITIES

Our approach



The goal of this program

- Technical assistance for four Colorado communities
- \$10,000 grant award to implement a single strategy
- Support a long-term vision of equitable park access
- Build on Colorado's state-level Safe Routes to Parks work





COLORADO
Department of Transportation



COLORADO
Department of Public
Health & Environment



COLORADO
Parks and Wildlife
Department of Natural Resources

Advancing Safe Routes to Parks in Colorado

Colorado Team
Annelies van Vonno, CDOT
Bradyn Nicholson, CDPHE
Kacie Miller, CPW



Safe Routes to Parks in Colorado

12 month TA program through the [Safe Routes to Park Accelerator Program](#) with Safe Routes Partnership (Oct 2022 - Nov 2023)

Work together to **improve safe, convenient, accessible, and equitable walking/rolling and biking routes to parks** and open spaces and implement projects and programs that better support local communities' park access needs in





Safe Routes to Parks in Colorado

Safe Routes to Parks Action Plan

- Understand local needs
- Align with SRTS efforts
- Develop messaging and a case study library
- Identify priority communities and areas through data alignment
- Collect policy language to include in future planning processes
- Integrate into existing grant programs
- Identify guidance for in park signage, accessibility, and infrastructure improvements

Which program strategy fits your community?



(1) Safe Routes to School + Parks

- **The Strategy:** Expand your Safe Routes to School program to include parks
- **We can help you to:**
 - Engage community members to assess, activate, and/ or implement route improvements
- **Apply grant funds to:**
 - Host Bike and Roll to School days based in a park
 - Activate a route between school and park
 - Add or improve infrastructure between a park and school

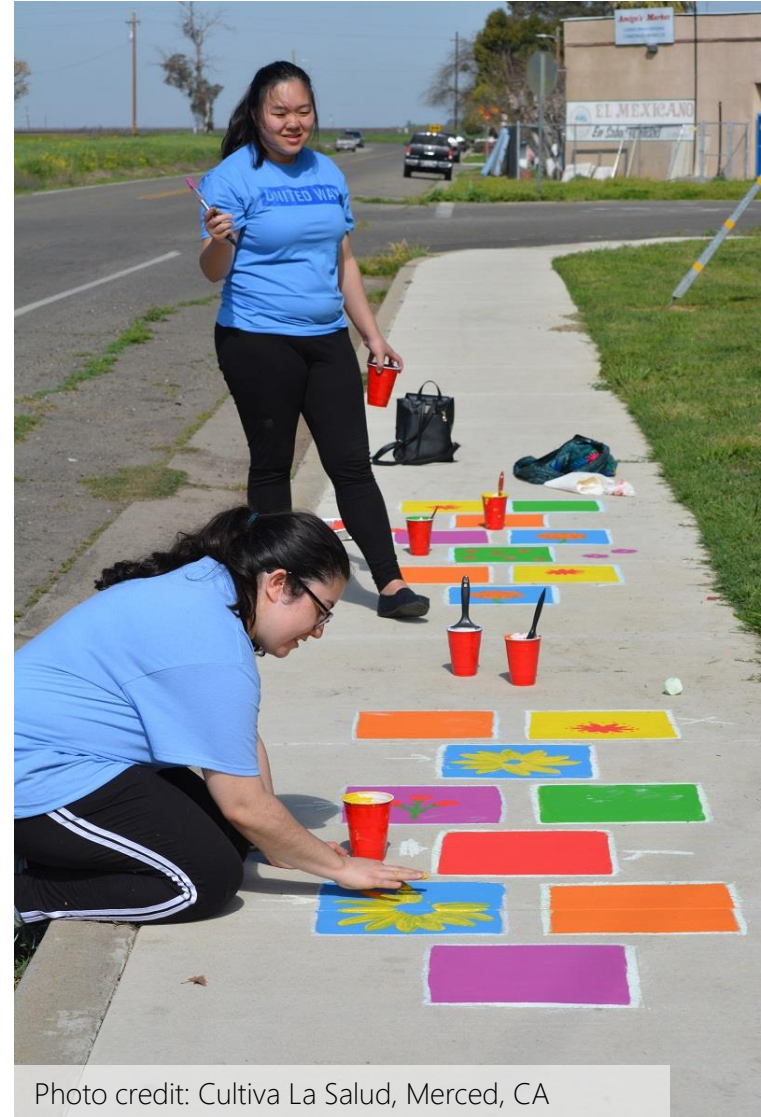


Photo credit: Cultiva La Salud, Merced, CA



(2) Traffic Gardens

- **The Strategy:** Use these colorful installations to build partnerships, elevate park access needs, and engage community members
- **We can you help to:**
 - Build buy-in with engagement & assessment activities
 - Evaluate the impact on park use
 - Strategize how to use traffic gardens to demonstrate a need for safer connections
- **Apply grant funds to:**
 - Install a temporary or permanent traffic garden
 - Engagement and evaluation activities



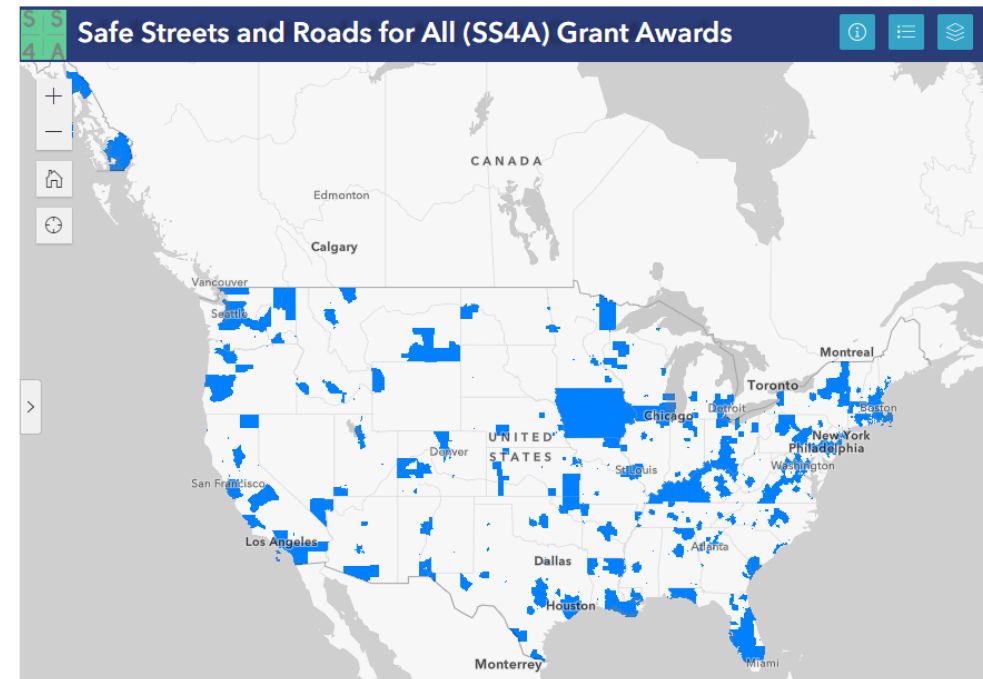
(3) Safe Streets for All Planning Grant

- **The Strategy:** Secure additional funds to develop a comprehensive safety action plan
- **We can help you to:**
 - Elevate community priorities into a system-wide plan
 - Assist with the grant application and writing
 - Identify, plan, and evaluate demonstration projects
- **Apply grant funds to:**
 - Use as a match for the U.S. DOT's Safe Streets for All planning grant
 - Community engagement and assessment activities to inform priorities – ex. walk audits, pop-up events, community surveys, etc.

SS4A 2022 Awards

On Feb. 1, 2023, [U.S. Transportation Secretary Pete Buttigieg](#) announced \$800 million in grant awards for 511 communities through the first round of funding for the Safe Streets and Roads for All (SS4A) grant program.

These awards include [474 Action Plan Grants](#) and [37 Implementation Grants](#), shown in the map below.



(4) Traffic Calming Zones

- **The Strategy:** Implement measures to help slow traffic near parks
- **We can help you to:**
 - Identify best practices
 - Craft messaging
 - Plan engagement around pilot projects
 - Create an assessment to measure impact
- **Apply grant funds to:**
 - Pilot traffic calming measures
 - Evaluate their effectiveness
 - Event planning and programming to build support



Photo credit: Alta Planning & Design, Coalinga, CA



Is this a good fit?

- ✓ Non-profit 501(c)(3) status located in Colorado
- ✓ Committed to advancing racial and social equity
- ✓ Center community voices and priorities and/or want to do more of this
- ✓ Commitment from a local government agency (e.g. parks, planning, and transportation)
- ✓ Capacity and commitment to carry out the engagement and planning activities required for this program



What comes with the program?

- Nine months of technical assistance from Safe Routes Partnership staff
- Coaching calls at least once a month
- In-person workshop and site visit facilitated by our team
- An action plan report compiled by our team
- Recommended tactics to sustain your work
- A \$10,000 implementation grant
- State-level support



What is required from grantees?

- Monthly coaching calls with Safe Routes Partnership staff, including participation from a local government agency staff
- Participate in two cohort training calls
- Assist with planning an in-person workshop & site visit
- Lead community engagement activities with our support
- Implement at least one early action from the plan
- Complete reporting requirements:
 - Submit a brief final report (no longer than two pages)
 - 30-minute exit interview
 - Complete program surveys



What makes for a good application?

- Focusing on a park/neighborhood/community (people or place) that have been underinvested in/disinvested from
- Tell the story! Why does your community want to work on this? Why is this needed where you live?
- Demonstrate capacity – How does this fit into existing priorities/work?
- Note: This does not fund the development of new parks



Timeline



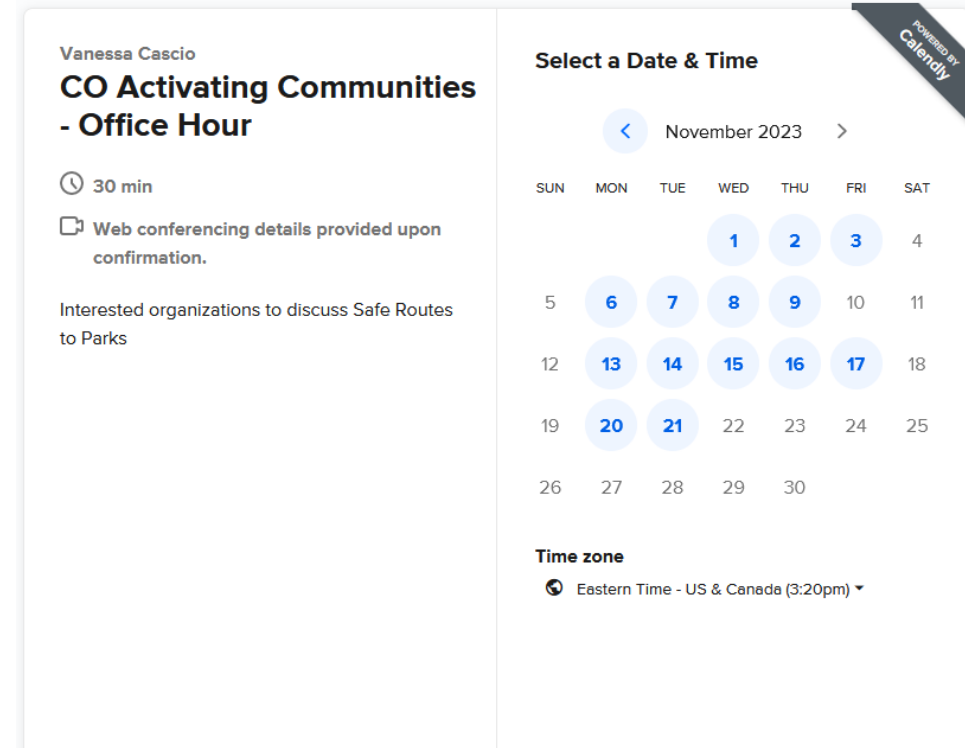
We are here to help!

Email:

vanessa@saferoutespartnership.org

Schedule a call:

<https://calendly.com/vanessa-srp/30min>



Vanessa Cascio
CO Activating Communities - Office Hour

30 min

Web conferencing details provided upon confirmation.

Interested organizations to discuss Safe Routes to Parks

Select a Date & Time

November 2023

SUN	MON	TUE	WED	THU	FRI	SAT
			1	2	3	4
5	6	7	8	9	10	11
12	13	14	15	16	17	18
19	20	21	22	23	24	25
26	27	28	29	30		

Time zone
Eastern Time - US & Canada (3:20pm)

powered by Calendly





Questions?