

# Safe Routes on the Inside

SRTS at the Portland Bureau of Transportation



[www.SafeRoutesPortland.org](http://www.SafeRoutesPortland.org)

Gabriel Graff, [gabriel.graff@portlandoregon.gov](mailto:gabriel.graff@portlandoregon.gov), 503-823-5291

# About PBOT

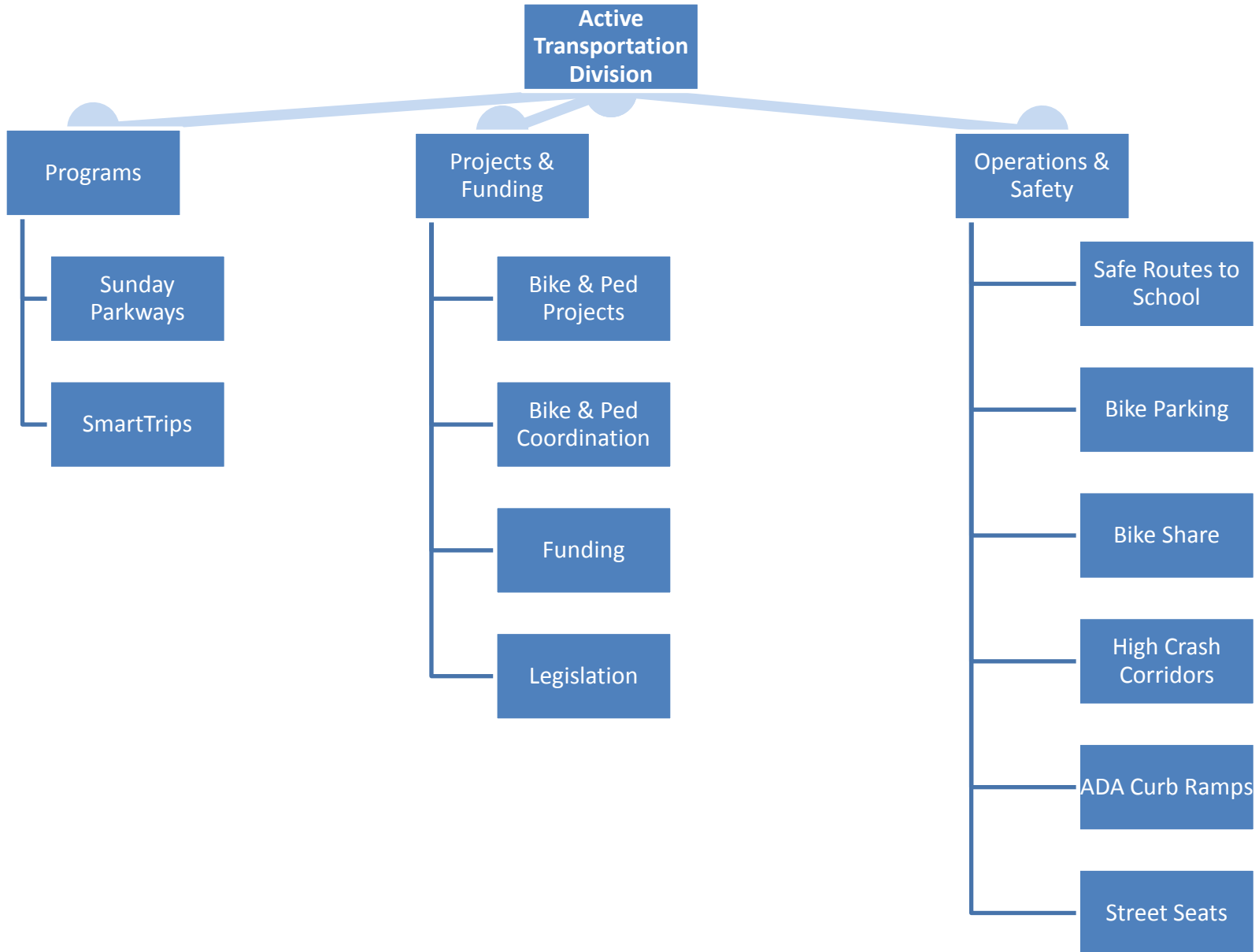
## Our Mission Statement

The City of Portland Bureau of Transportation is a community partner in shaping a livable city. We plan, build, manage and maintain an effective and safe transportation system that provides people and businesses access and mobility.

We keep Portland moving.



# Our Active Transportation Division



# Brief History of SRTS in Portland

Community Relations staff hired to respond to growing school traffic safety concerns

Portland Community School and Traffic Safety Partnership established



**2000**



**2001**

State of Oregon passes House Bill 3712 (known as the "Safe Routes to School Bill")



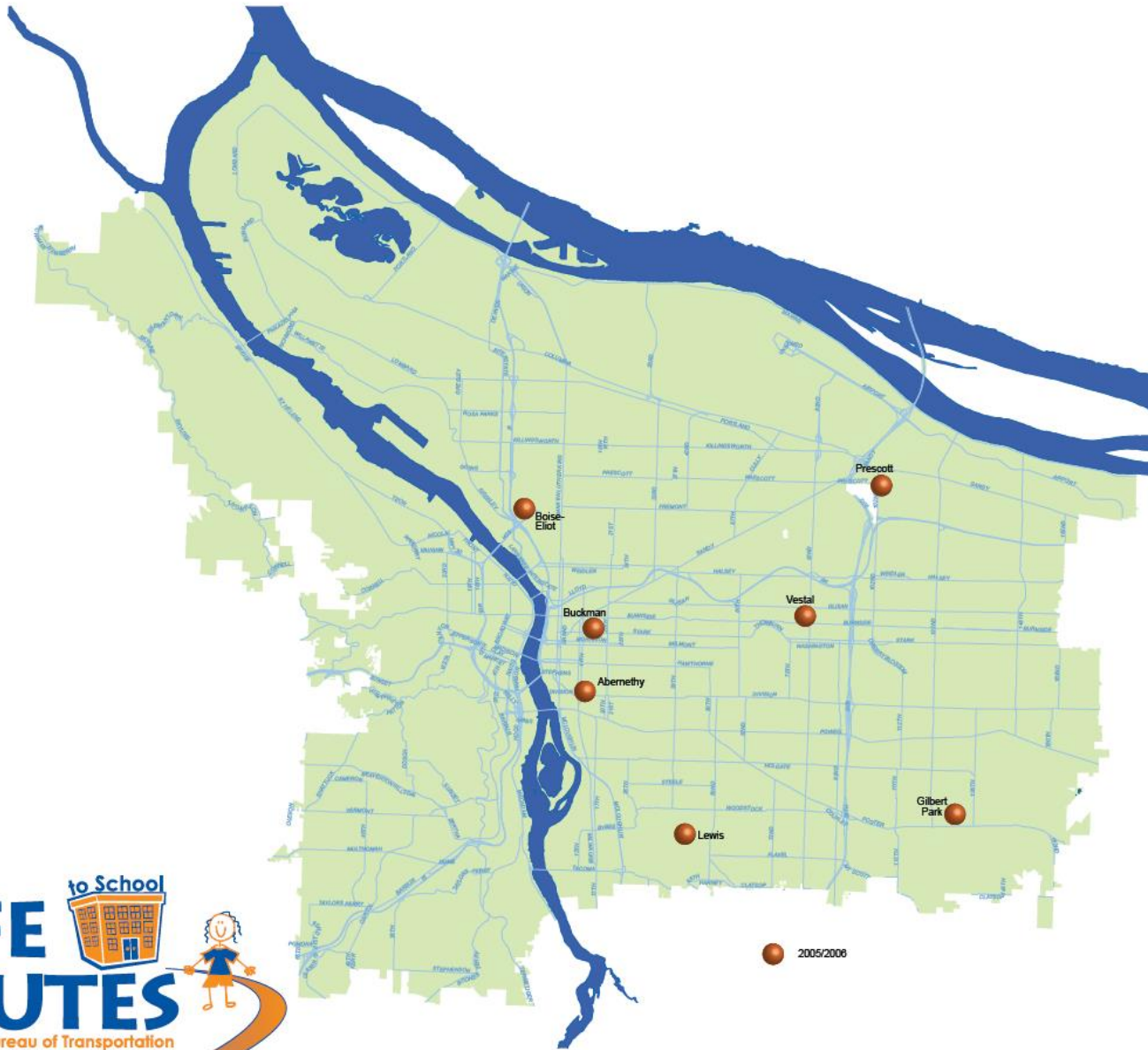
**2003**



**2004**

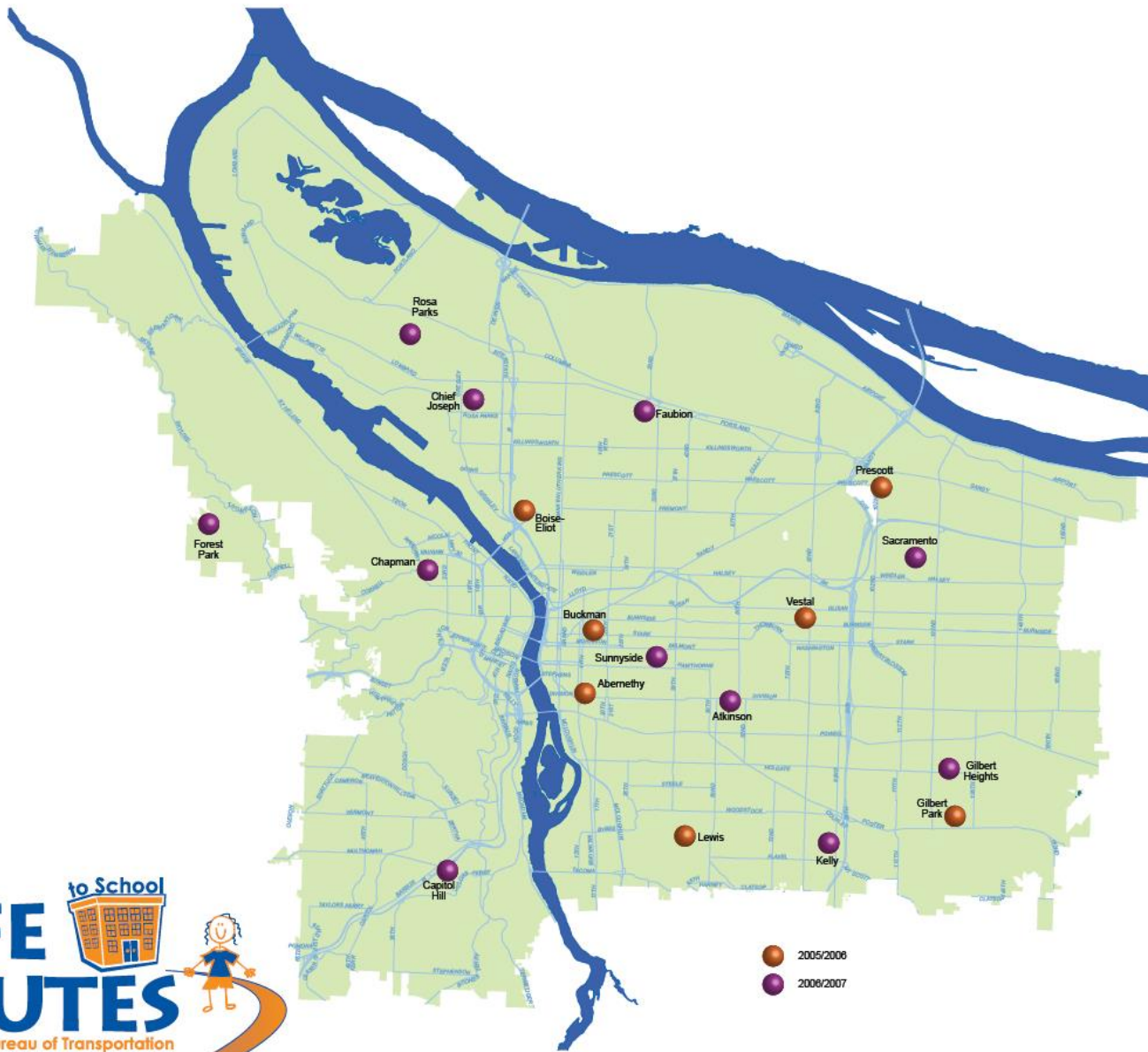
Oregon Health Department funds small pilot projects at 5 schools



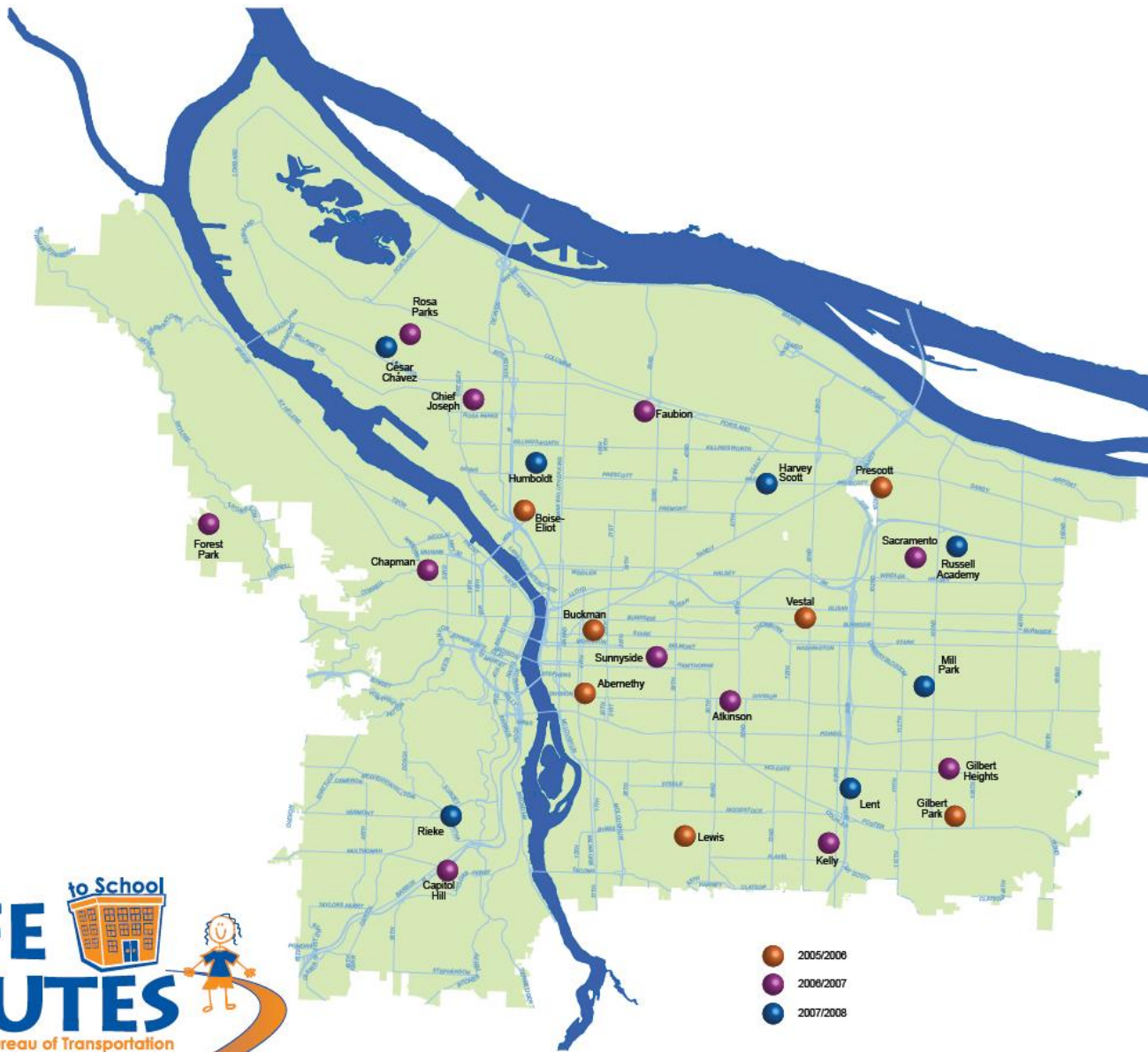


Have fun. Be safe. Grow healthy. Get there.

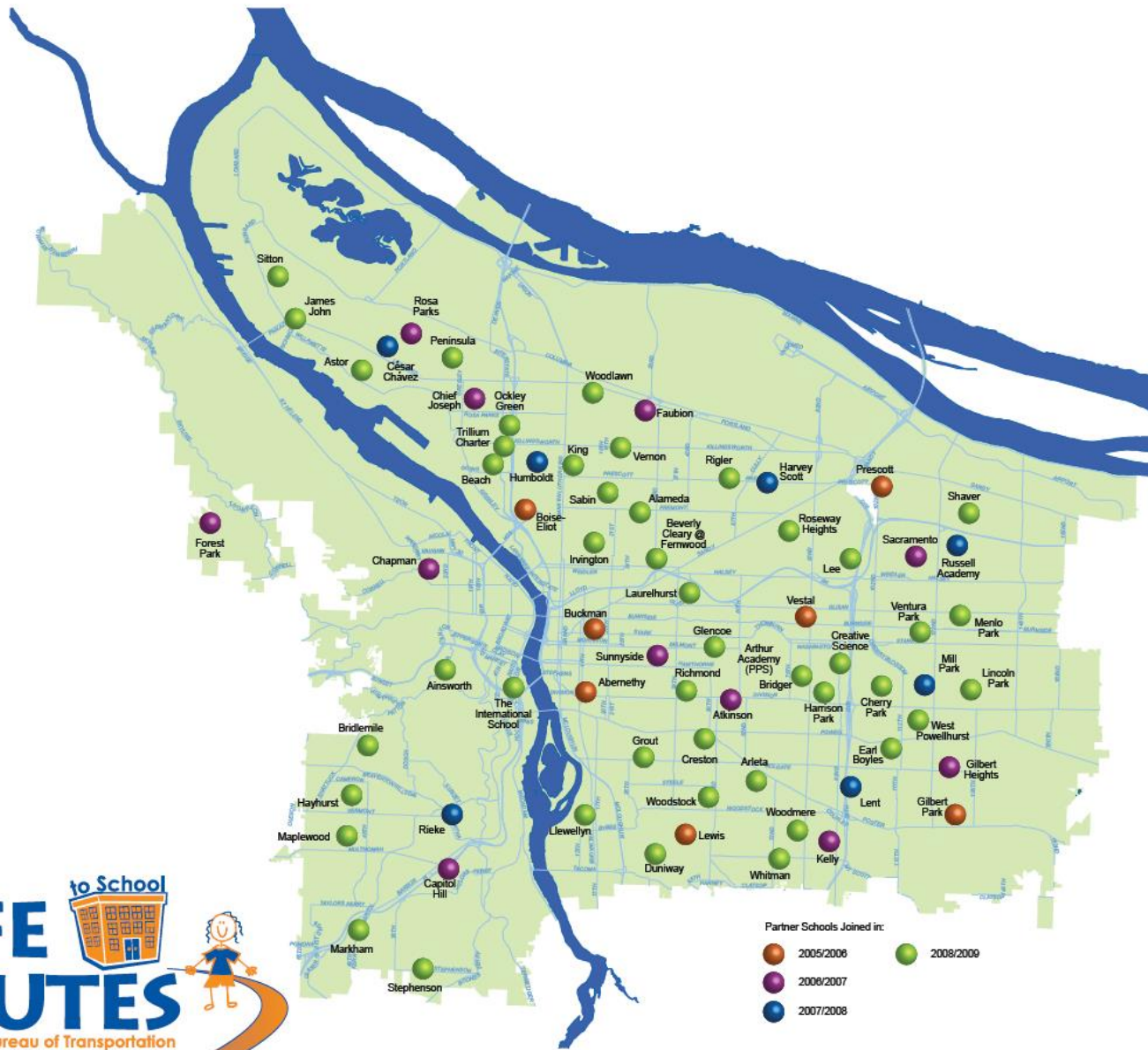




Have fun. Be safe. Grow healthy. Get there.

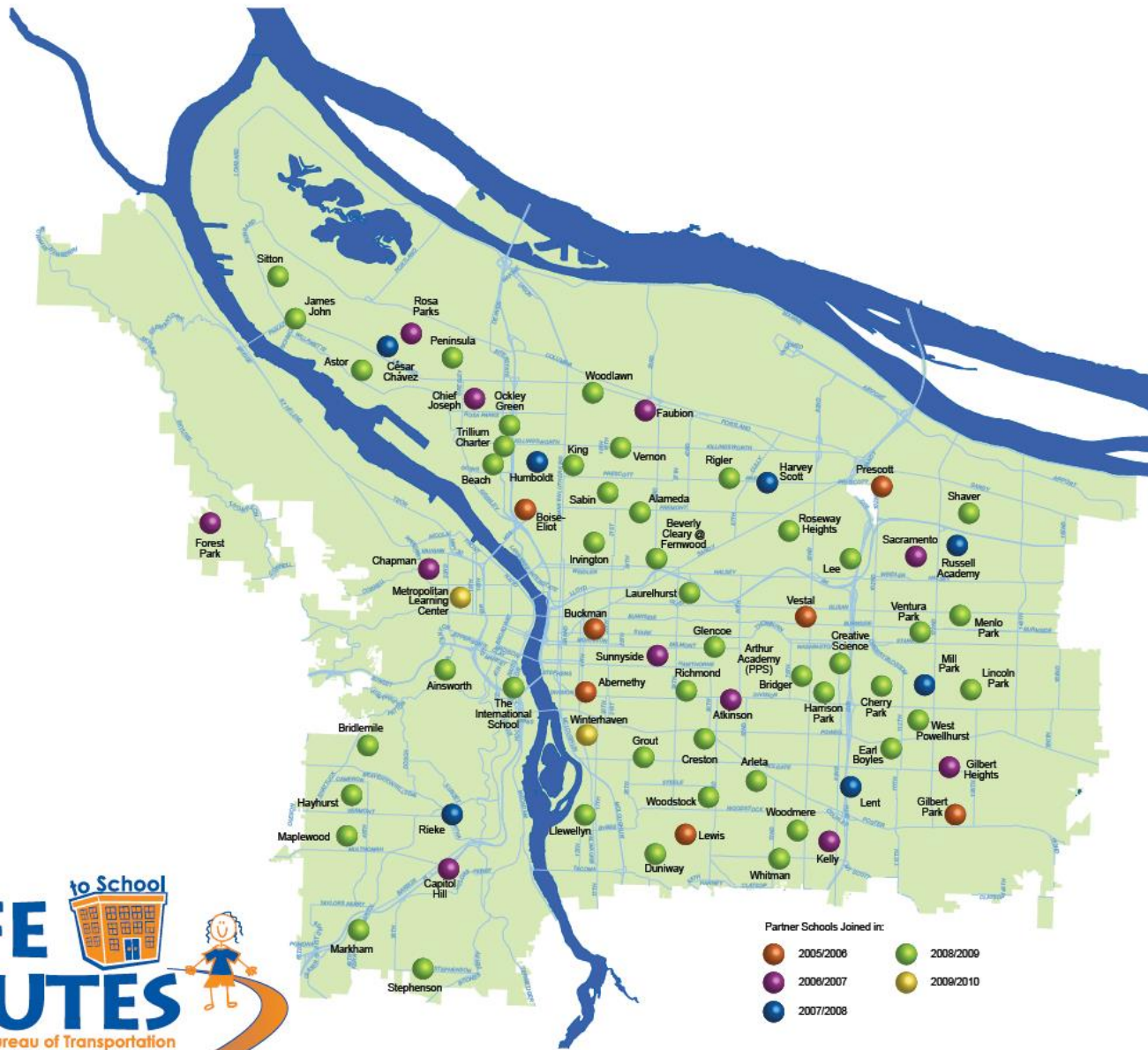


Have fun. Be safe. Grow healthy. Get there.

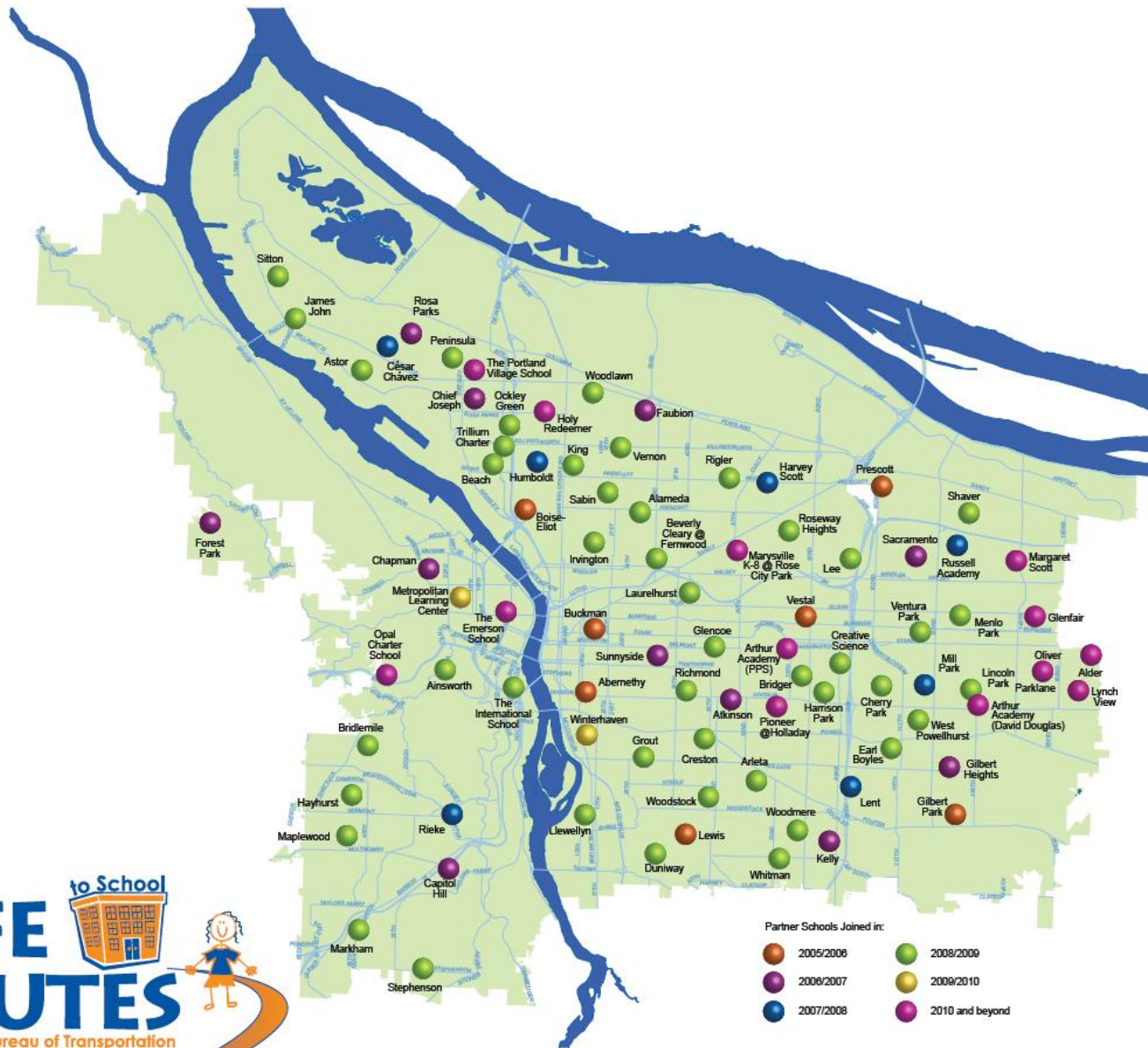


Have fun. Be safe. Grow healthy. Get there.





Have fun. Be safe. Grow healthy. Get there.



Have fun. Be safe. Grow healthy. Get there.

# Safe Routes in Portland

(today)

- Serve 80+ schools with a range of services
- ~2.75 FTE in Transportation Bureau staff
- Contract with the Bicycle Transportation Alliance for pedestrian and bike safety

# Dedicated Funding Efforts

2002

- Pursued “Violator Pays Initiative” to raise traffic fines. Failed.

2003

- Oregon Legislature raises traffic fines. Portland City Council dedicates increased revenue to Traffic Safety Account.
- Traffic Safety Account funds dedicated to SRTS, Adult Ped. & Bike Safety, and Reducing Driver Error.

2009

- Oregon Legislature raises the gas tax for the first time since 1993 via House Bill 2001.
- Portland Bureau of Transportation sets aside a portion of increased funds for Safe Routes capital projects.





# Suggestions for getting SRTS

(within a municipal transportation dept.)

- Figure out what's not working for the transportation department (safety, schools, coordination, communication?) and design a position that fixes those problems
- Ensure the position will add value for the transportation department
- Ensure there is public recognition of this value
- Use early success to lobby for sustainable funding



# Policy

## City of Portland Safe Routes to School Policy



March 2012

Portland  
Plan  
(2011)

City of Portland  
Comprehensive Plan  
(2012)

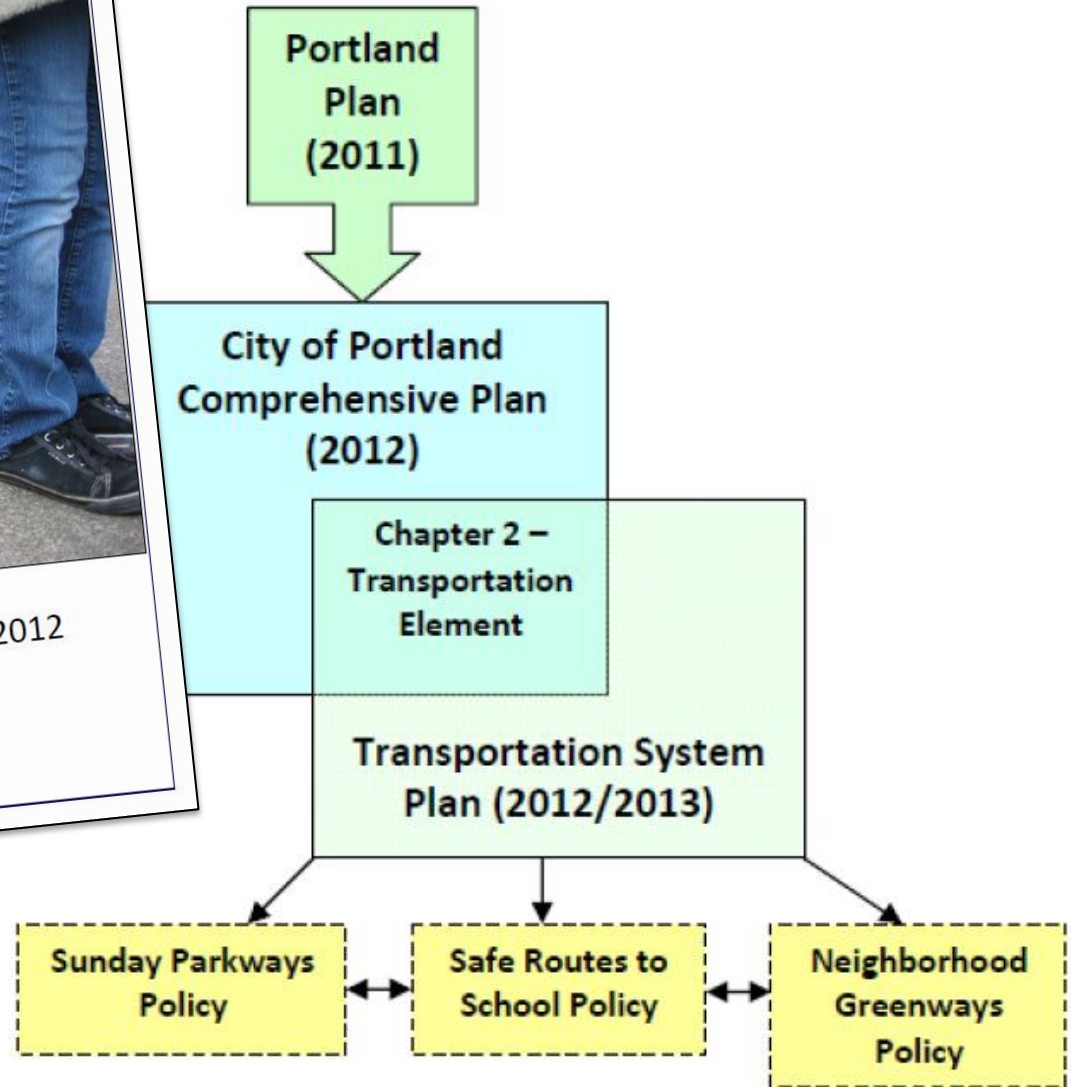
Chapter 2 –  
Transportation  
Element

Transportation System  
Plan (2012/2013)

Sunday Parkways  
Policy

Safe Routes to  
School Policy

Neighborhood  
Greenways  
Policy



# Policy

## Strategic Policies

The strategic policies were created by SRTS staff and stakeholders to represent the mission and visions for the SRTS program through 2035. All SRTS efforts should align with these policies. Metrics, objectives, and responsible parties for these strategic policies are details in the complete policy document.



- **Education.** Equitably ensure that all students and their families have access to comprehensive transportation education.



- **Encouraging the Active Trip.** Increase the number of students walking and biking by encouraging active trips to school and other destinations through programming, outreach, and partnerships.



- **Community Involvement and Partnerships.** Grow and maintain a large constituency of diverse and engaged partners, volunteers, and community stakeholders to better serve students and foster a sustainable SRTS program.



- **Planning for Equitable Transportation.** Continually advance coordination between the Portland Bureau of Transportation and agency partners to equitably plan for the active trip.



- **Building and Maintaining Active Routes.** Equitably create transportation infrastructure to assure that walking and biking to school are safe, convenient, accessible, and desirable choices.

# Policy

## Strategic Policies

The strategic policies were created by SRTS staff and stakeholders to represent the mission and visions for the SRTS program through 2035. All SRTS efforts should align with these policies. Metrics, objectives, and responsible parties for these strategic policies are details in the complete policy document.

## Equity Goals

The above goals for Safe Routes to School will be measured citywide and per school. The SRTS program is committed to achieving the goals in all schools, but is especially committed to meeting the goals in schools with high percentages of students and families that have the highest risk of having inequitable access to transportation, including people of color, people experiencing poverty, people with disabilities, and people who experience language barriers.

These policies and goals will guide Portland's Safe Routes to School Program.

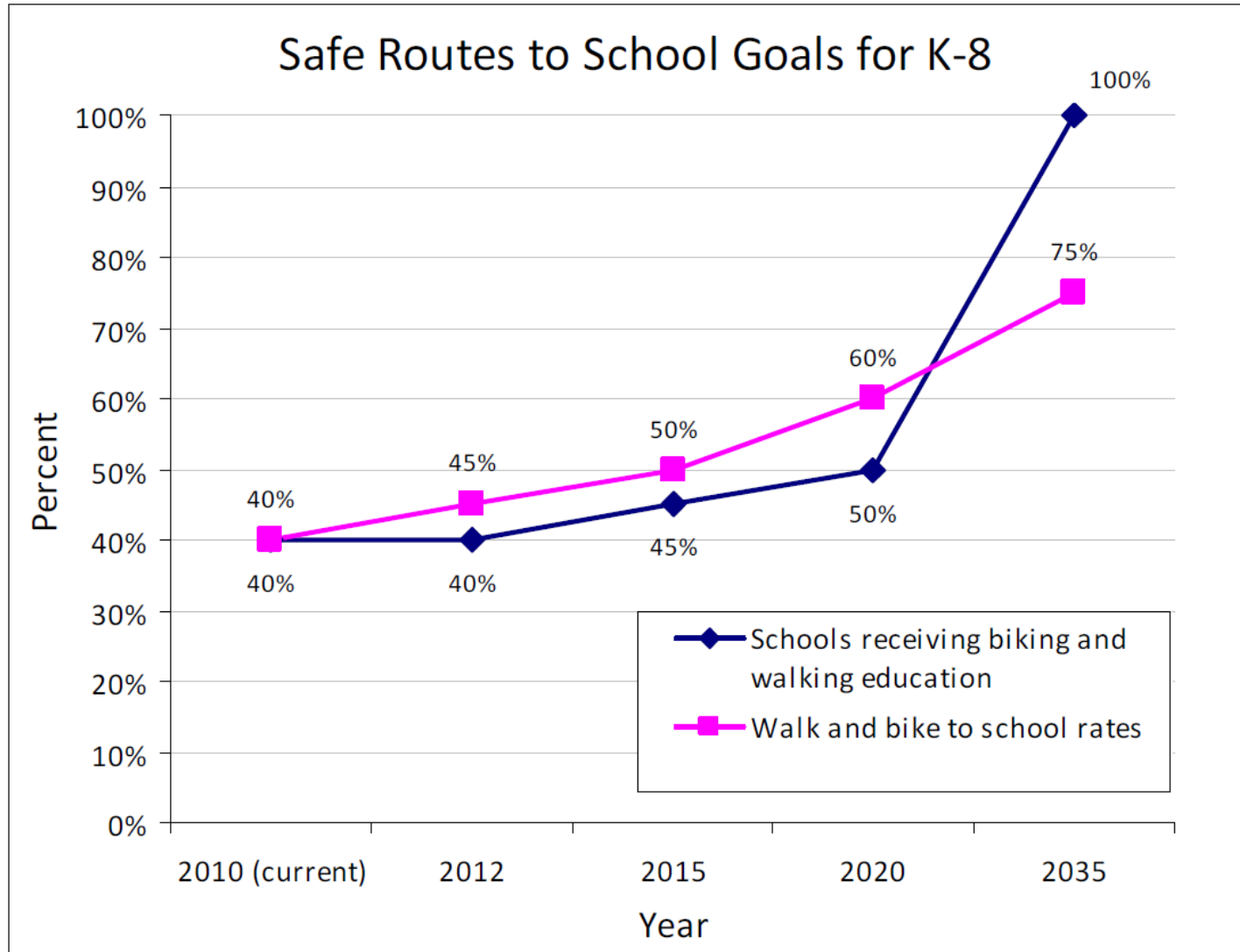
program.



- **Planning for Equitable Transportation.** Continually advance coordination between the Portland Bureau of Transportation and agency partners to equitably plan for the active trip.
- **Building and Maintaining Active Routes.** Equitably create transportation infrastructure to assure that walking and biking to school are safe, convenient, accessible, and desirable choices.

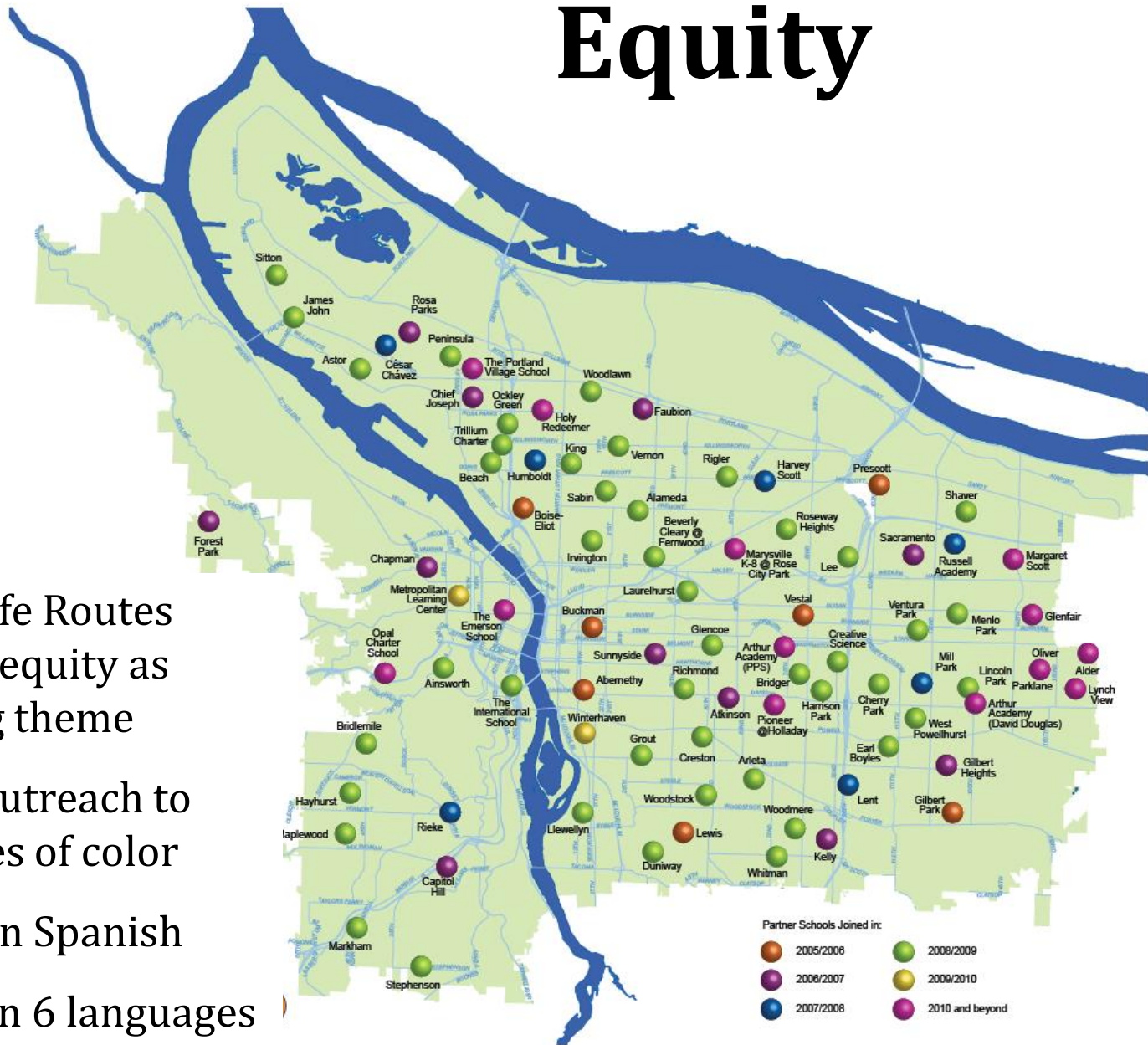


# Policy



# Equity

- Created Safe Routes policy with equity as overarching theme
- Targeted outreach to communities of color
- Trainings in Spanish
- Materials in 6 languages



Have fun. Be safe. Grow healthy. Get there.





Ped. Safety at Abernethy

**Education**

2<sup>nd</sup> Grade  
Pedestrian Safety Education

4<sup>th</sup> & 5<sup>th</sup> Grades  
Bicycle Safety Education





# Education

2<sup>nd</sup> Grade

Pedestrian Safety Education

4<sup>th</sup> & 5<sup>th</sup> Grades

Bicycle Safety Education

Students in Bike Safety



# Encouragement

Walk + Bike to School Day  
Sacramento Elementary School



Claudia Ruseck – School Counselor & Safe Routes  
Champion at Sacramento





# Bike Train PDX

Communities biking to school together, one day a week

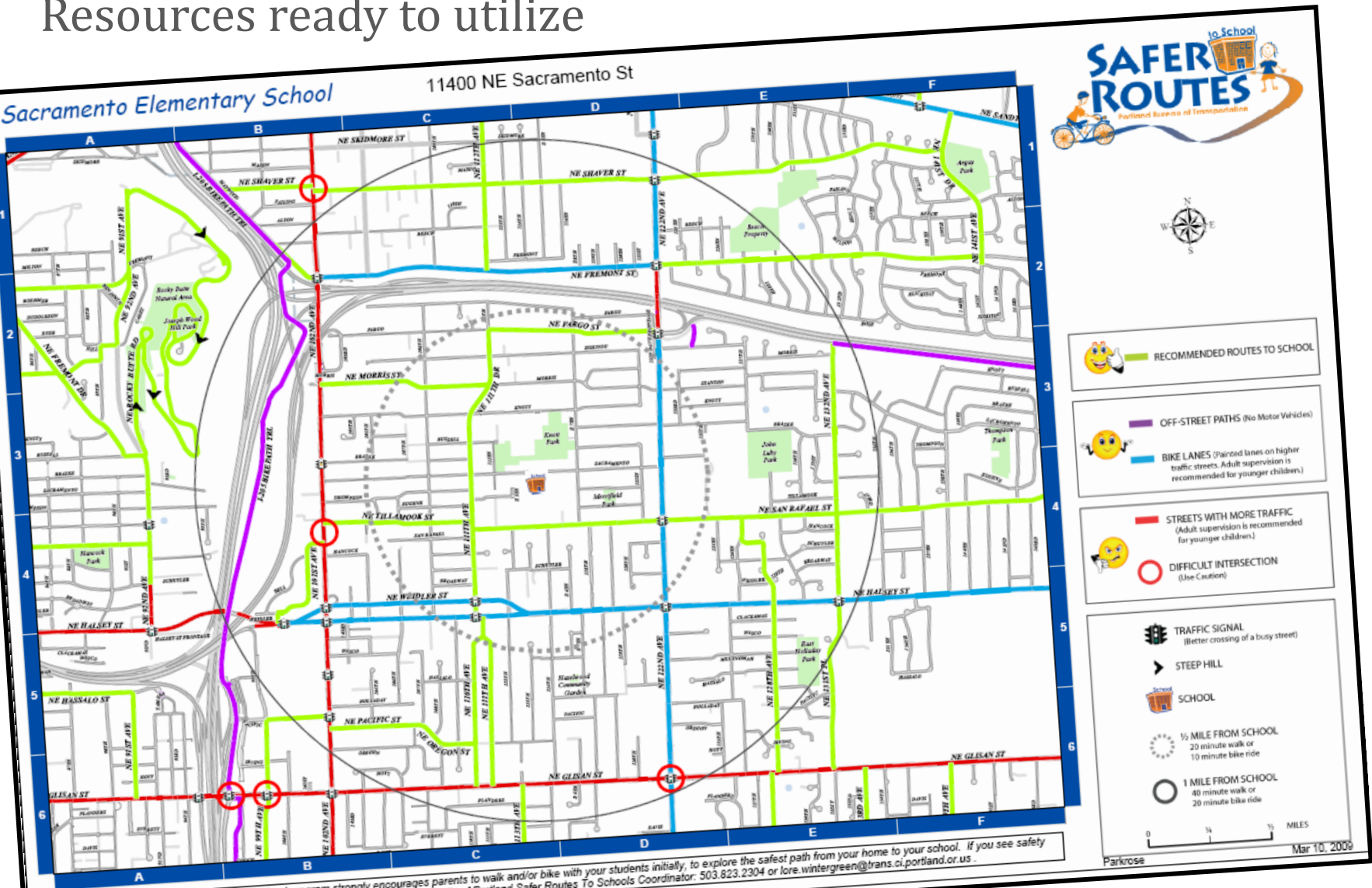


# Encouragement



# Encouragement

Resources ready to utilize



The City of Portland Safer Routes To School program strongly encourages parents to walk and/or bike with your students initially, to explore the safest path from your home to your school. If you see safety problems along the identified safer routes, please contact Lore Wintergreen, City of Portland Safer Routes To Schools Coordinator: 503.823.2304 or [lore.wintergreen@trans.ci.portland.or.us](mailto:lore.wintergreen@trans.ci.portland.or.us).

# Encouragement

Resources ready to utilize



## 1 Where should your Safer Routes to School SmartTrips materials be delivered? Please print:

Parent/Caregiver Name: \_\_\_\_\_

Address: \_\_\_\_\_

City: Portland State: OR Zip: \_\_\_\_\_ Phone: \_\_\_\_\_ Email: \_\_\_\_\_

My child's school: \_\_\_\_\_

Please keep me up to date on SR2S by  email or  mail.

**Family Events** Get a schedule of family-friendly walking, bicycling, and bus-riding events in your neighborhood for one fun-packed school year and summer.

Check here if you can help volunteer or plan some fun events.

### Family Adventures in Safe Transportation:

A workbook for children and their parents. Provides important information and fun activities for students to learn about pedestrian, bicycle, and child passenger safety. (Please tell us if you need more than one per grade level.)

- Grade K-1 # \_\_\_\_\_
- Grade 2-3 # \_\_\_\_\_
- Grade 4-5 # \_\_\_\_\_

### Choose Your Own Safer Routes to School SmartTrips Adventure Session.

A specialist will meet with you and your family to discuss the best ways for you to get around the city using environmentally-friendly transportation – tips, tricks, and questions answered!

## 6 CHOOSE YOUR FREE GIFT!

### A. Hand-Pumped Flashlight

This flashlight requires no batteries, only hand-powered action.

Student \_\_\_\_\_ A B C  
 Student \_\_\_\_\_ A B C  
 Student \_\_\_\_\_ A B C

### B. Walk There!

Pocket-sized booklet of 50 walks in and around Portland and Vancouver. You and your family can discover some new parks and fun places.

**C. I Love My Bike Bell** Great for letting walkers and other bicyclists know that you're nearby or passing, or for ringing your heart out.

Please limit one gift per student.  
 Circle one choice for each.... While supplies last!



All materials will be delivered by bicycle within 2 weeks of receiving your order form.

## 2 WALKING

Please check  as many boxes as you would like.

**Portland Walking Maps** Detailed local area maps of walking, biking, bus and MAX routes.

- North Portland  Southeast Portland
- Northeast Portland  Southwest Portland

**Safer Routes to School Family-Friendly map** This map includes safer routes within 1 mile of your children's school (great for bicycling and walking).

**What Every Child Should Know About Pedestrian Safety!** Pedestrian safety information and laws

**Volunteer!** Learn how to lead, help, and have some fun with a walking Safer Routes to School activity or event with your child's school.



## 3 BICYCLING

Please check  as many boxes as you would like.

**Portland Bicycle Maps** Detailed citywide and local area maps of bicycling routes

- Portland Citywide Bicycle Map and Resources For all skill levels
- North Portland  Outer Southeast Portland
- Northeast Portland  Southeast Portland
- Downtown Portland  Southwest Portland

**Portland By Cycle: A Guide to Your Ride** Tips, techniques and street smarts to make your ride safer and more rewarding. Includes tips on fitting your helmet and dressing for the elements.

**Safer Routes to School Safe Biking Handbook** A student's guide for learning how to safely ride a bicycle. Includes instruction for proper helmet fitting and basic rules of the road.

**A Perfectly Fitted Bicycle Helmet Guide** An illustrated guide

**Volunteer!** To assist with your school's Bicycle Safety Education class for 4th or 5th grade students, or to learn how to lead, help, and have some fun with a bicycling Safer Routes to School activities or events with your child's school.



## 4

### DRIVING WISELY

Please check  as many boxes as you would like.

**Idling Your Car** Facts on engine idling and reducing pollution that every driver should know.

**I Brake for Kids bumper sticker** Perfect for letting other drivers know that you slow down for children and other walkers and bicyclists.

**Child Passenger Safety Brochure** Includes age and weight requirements for child safety seats, booster seats, and lap and shoulder belts. Also comes with a schedule for Portland fitting stations.

## 5 BUS, LIGHT RAIL, STREETCAR, TRANSIT, AERIAL TRAM

Please check  as many boxes as you would like.

### Bus Schedules and Routes

Select the bus, light rail (MAX) or street car routes you want

Bus Route # \_\_\_\_\_ Bus Route # \_\_\_\_\_

Bus Route # \_\_\_\_\_ Other \_\_\_\_\_

If you don't know, we'll choose schedules for routes closest to your home.

**Personalized Transit Tracker card** We'll send you your closest bus Stop ID number so you can call to find out when the next bus is coming in real time.

**TriMet Rider's Guide** Information on fares and how to ride TriMet buses, light rail (MAX), and the Portland Streetcar.

**Earl P. Nutt Activity Books** Fun puzzles and coloring pages for all ages interested in learning about safety around buses and MAX lines. (Please indicate if you need more than one per grade level.)

**Earl P. Nutt's Safety Adventure**, grades K-3 # \_\_\_\_\_

**Earl P. Nutt's Safety Challenge**, grades 4-8 # \_\_\_\_\_

**Fold-A-Bus Change Bank** Folds into a TriMet bus with slot for collecting coins and dollars for bus fare.

**The Magic School Bus Gets Cleaned Up** Children's book Ms. Fritzzle's class learns about air pollution so their diesel-powered school bus can get retrofitted to control pollution.

**Volunteer!** Learn how to organize your own Transit Treasure Hunt or other public transportation activity.

**Sign Up!** For more information about joining a carpool to help students get to school. Your Safer Routes to School staff will help you find others interested in carpooling to your school.

**Volunteer!** Learn how to organize, help, and have some fun with a Pollution Reducin' Campaign and other driving wisely activities at your child's school.







# Encouragement

Resources ready to utilize

**1** What is the name of your child's school?  
Parent/Caregiver Name: \_\_\_\_\_  
Address: \_\_\_\_\_  
City: *Portland*  
My child's grade: \_\_\_\_\_  
Please keep this form in your mailbox for one year and return it to the school.

Family-Friendly: A work-friendly environment in your neighborhood.

Family-Friendly: A work-friendly environment in your neighborhood.

Family-Friendly: A work-friendly environment in your neighborhood.

**6** CHOOSE YOUR GIFT

**A. Hand-Pumped Flashlight** This flashlight requires no batteries, only hand-powered action.

**B. Walk There!** Pocket-sized booklet of 50 walks in and around Portland and Vancouver. You and your family can discover some new parks and fun places.

**C. I Love My Bike Bell** Great for letting walkers and other bicyclists know that you're nearby or passing, or for ringing your heart out.

Student \_\_\_\_\_ A B C  
Student \_\_\_\_\_ A B C  
Student \_\_\_\_\_ A B C

Please limit one gift per student.  
Circle one choice for each.... While supplies last.

## Safe Routes to School Campaign Manual

A Guide to Promoting Walking and Biking at your School

Stop + Walk • Walking School Bus • Bike Train

**SAFE ROUTES**  
A Guide to Promoting Walking and Biking at your School

**CITY OF PORTLAND**  
BUREAU OF TRANSPORTATION



# Engineering - Prescott School

----- BEFORE -----



----- AFTER -----



Median Refuge Island  
Crosswalk & Signing

Speed Bumps

Paved Shoulder



# Engineering

Sacramento

Russell Academy

----- Bike Parking -----



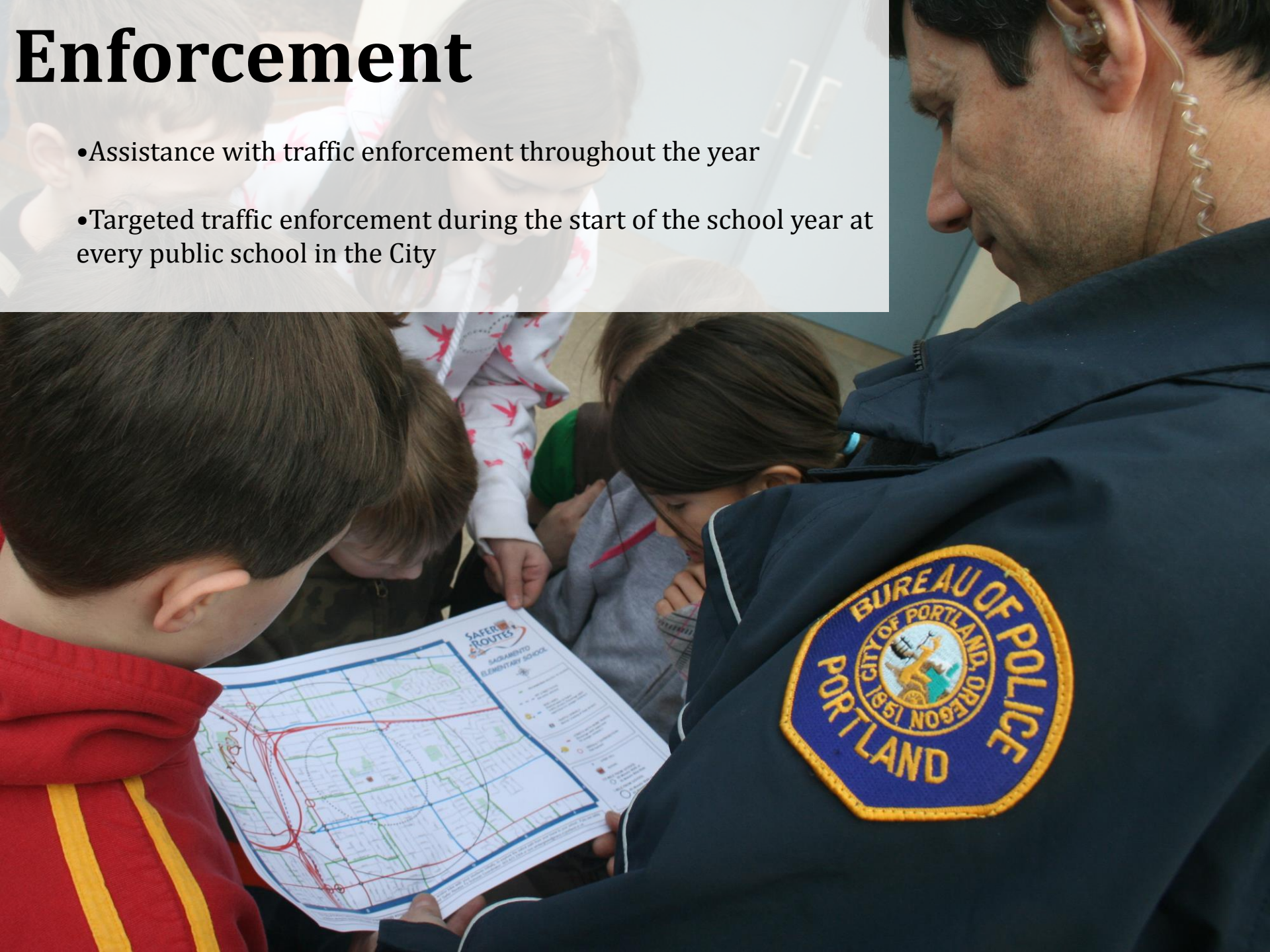
----- Marked Crossings -----





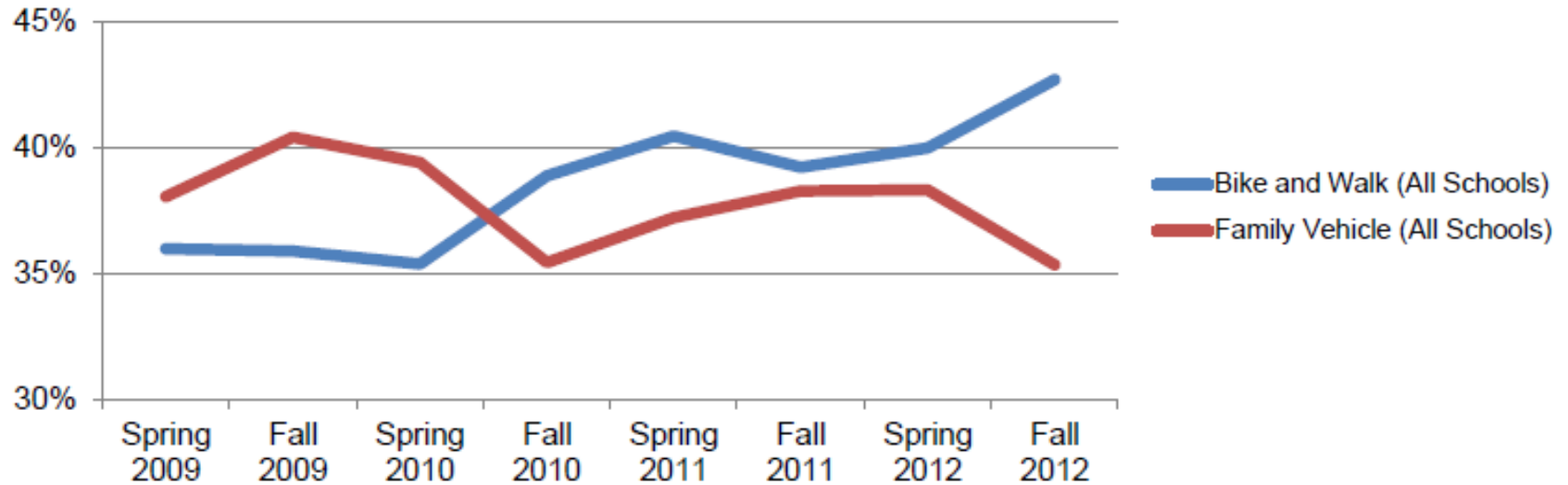
# Enforcement

- Assistance with traffic enforcement throughout the year
- Targeted traffic enforcement during the start of the school year at every public school in the City



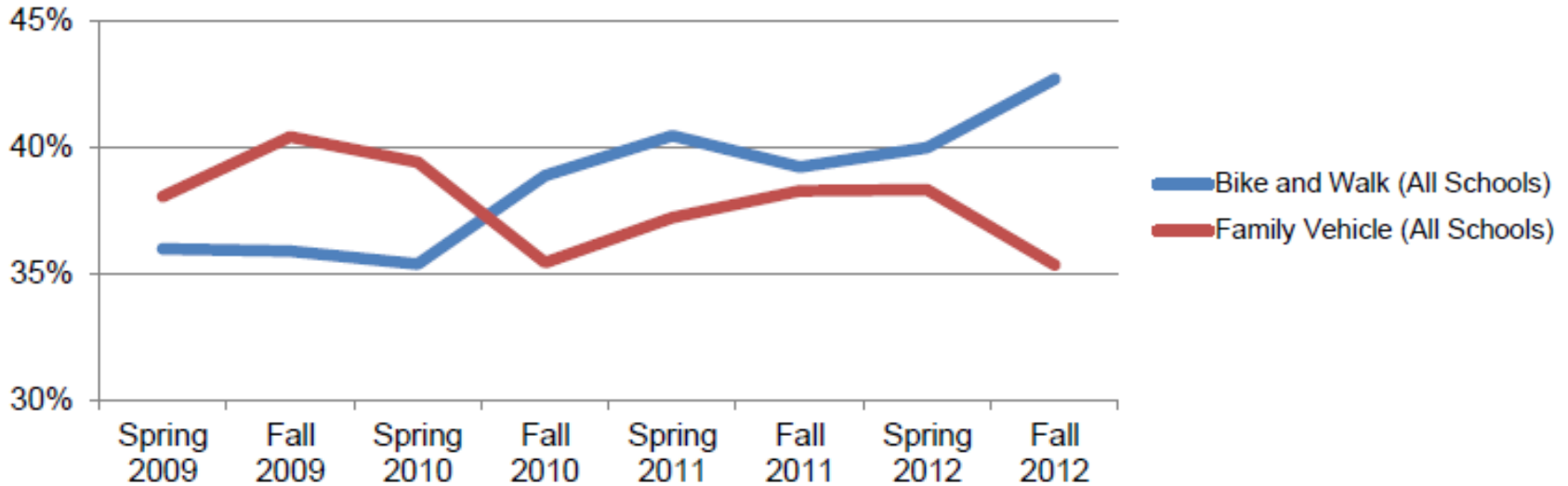
# Evaluation

How has Safe Routes to School historically performed?

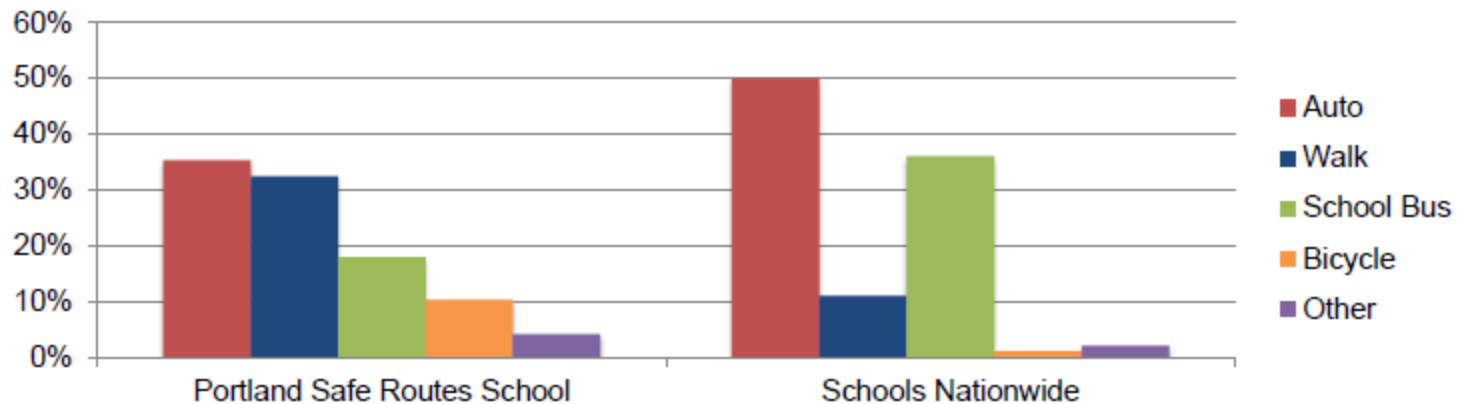


# Evaluation

How has Safe Routes to School historically performed?



How are different modes of transportation used in Portland compared to the national average?





# What's Next: Equity & Bike Parking



**Franklin High  
School**



**Benson High School**

# What's Next: Equity & Bike Parking



## Franklin High School

36 City-installed bike  
parking spaces



# What's Next: Equity & Bike Parking

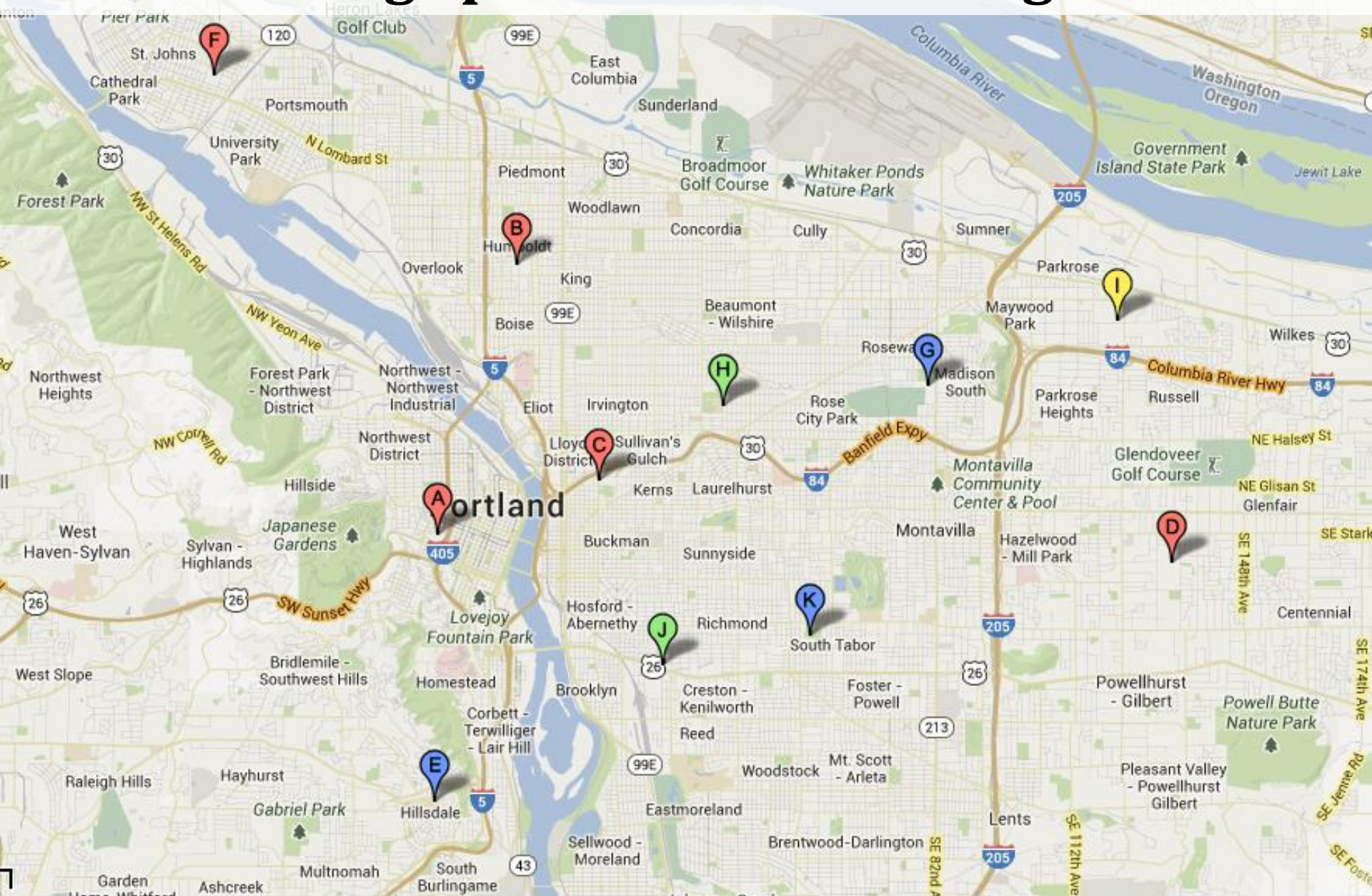
**Benson High School**

No bike parking





# Bike Parking Spaces at Portland High Schools

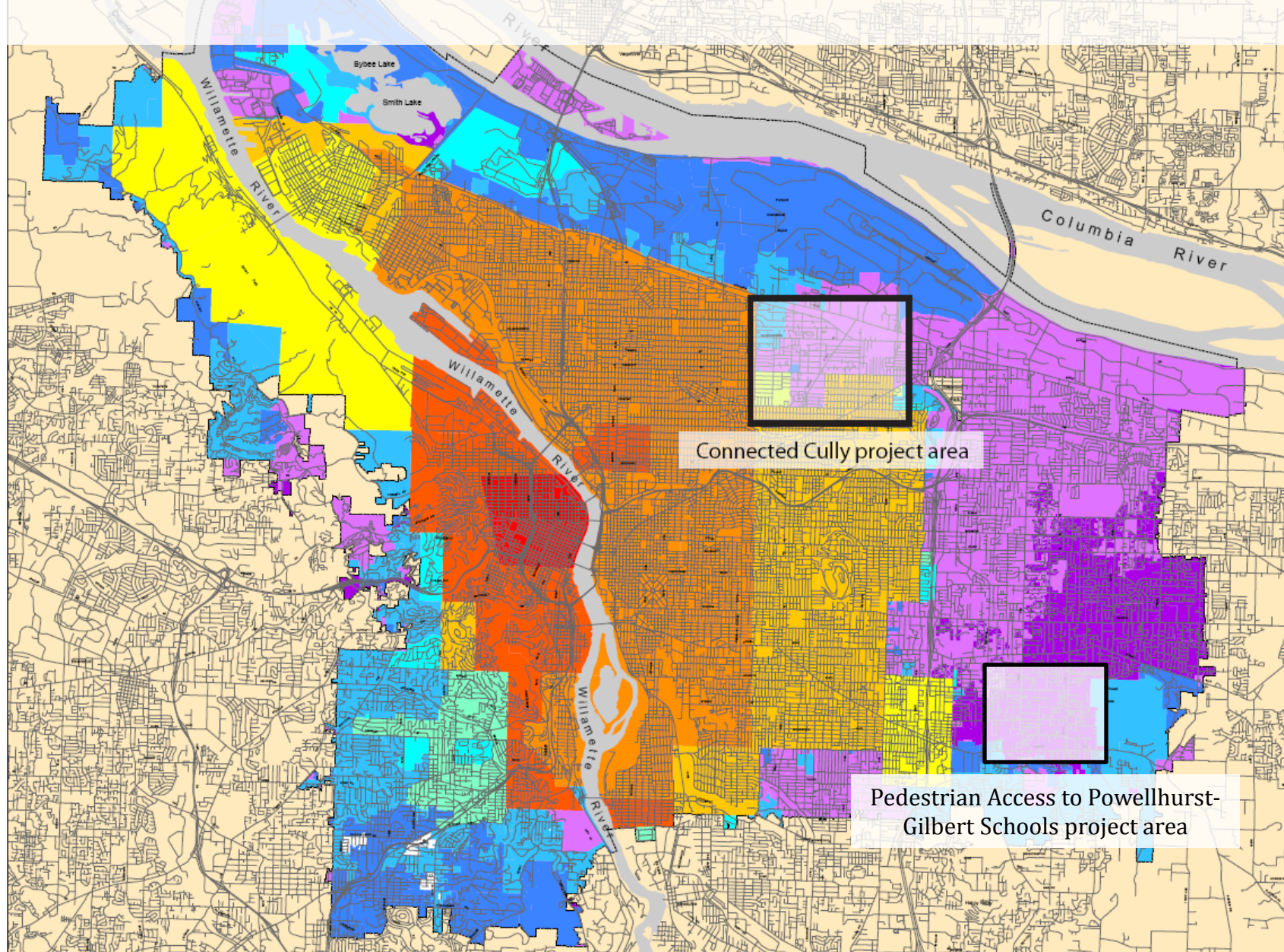


# of spaces 0 30-40 50-60 150+



# What's Next: SRTS as a Network

## Annexations to the City of Portland



**Legend**

- City Boundary
- Area outside of City

**Annexations by Year**

- Pre 1881
- 1881 - 1900
- 1901 - 1910
- 1911 - 1920
- 1921 - 1930
- 1931 - 1940
- 1941 - 1950
- 1951 - 1960
- 1961 - 1970
- 1971 - 1980
- 1981 - 1990
- 1991 - Present
- No Data

N

0 1,000 2,000 4,000 6,000 Feet

**INFORMATION SOURCES:**

Street Centerlines: U.S. Census Bureau TIGER data, registered to location under contract to Metro. Updated by Metro through Jan. 1999.

City Boundary: Copied by Portland Department of Transportation. Updated by POCOT and Bureau of Planning, October 2000. Registered to base data maps.

All data compiled from source materials at different scales. For more detail, please refer to the source materials or City of Portland, Bureau of Planning & Sustainability.

The information on this map was derived from digital databases on the City of Portland. Bureau of Planning & Sustainability, GIS.

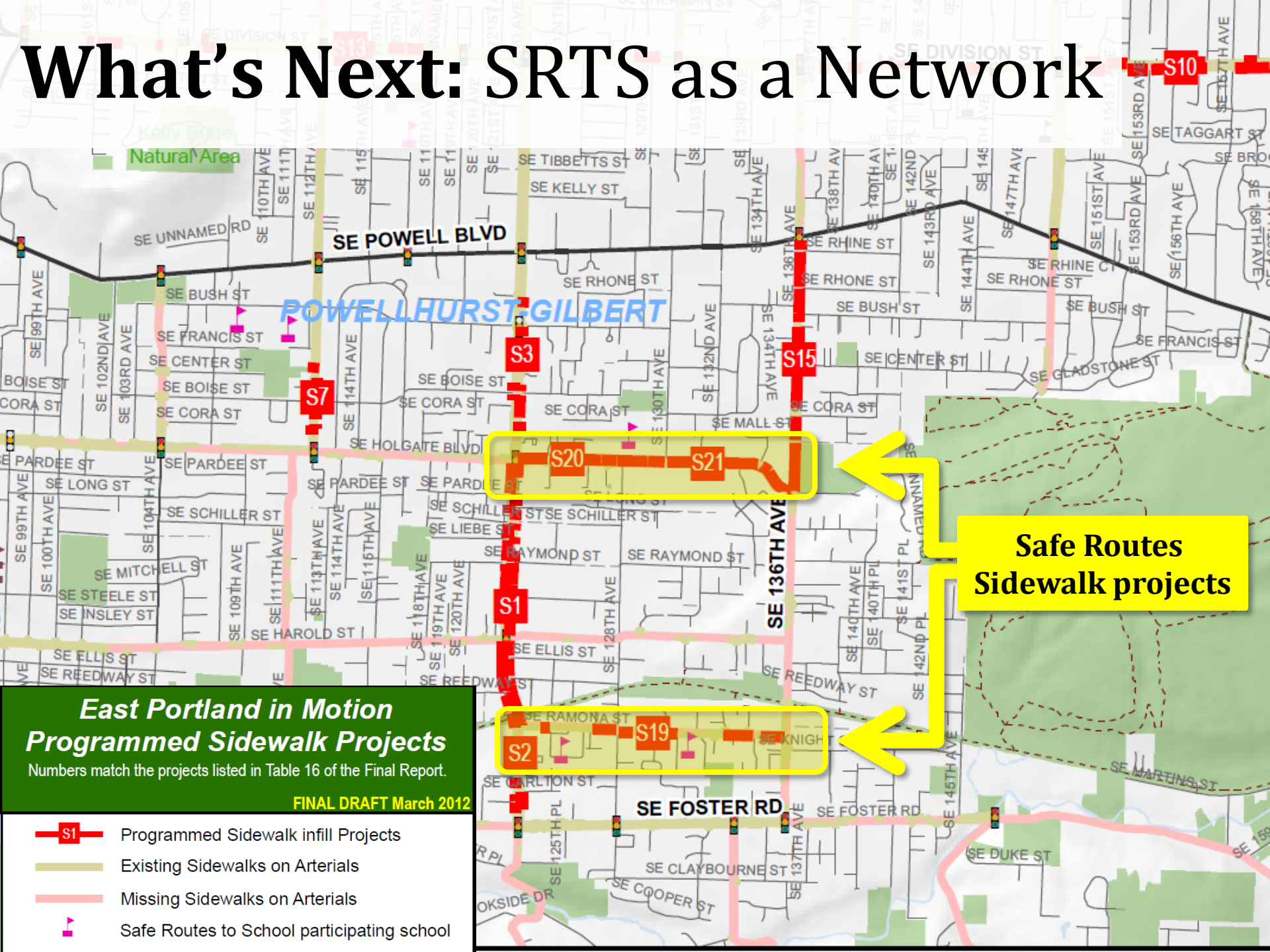
Caution was taken in the creation of this map, but it is provided "as is". The City of Portland cannot accept any responsibility for any omissions, or positional accuracy, and therefore, there are no warranties which accompany this product. However, notification of any errors will be appreciated.

Pedestrian Access to Powellhurst-Gilbert Schools project area

Connected Cully project area







# What's Next: SRTS as a Network



## East Portland in Motion Programmed Sidewalk Projects

Numbers match the projects listed in Table 16 of the Final Report.

FINAL DRAFT March 2012

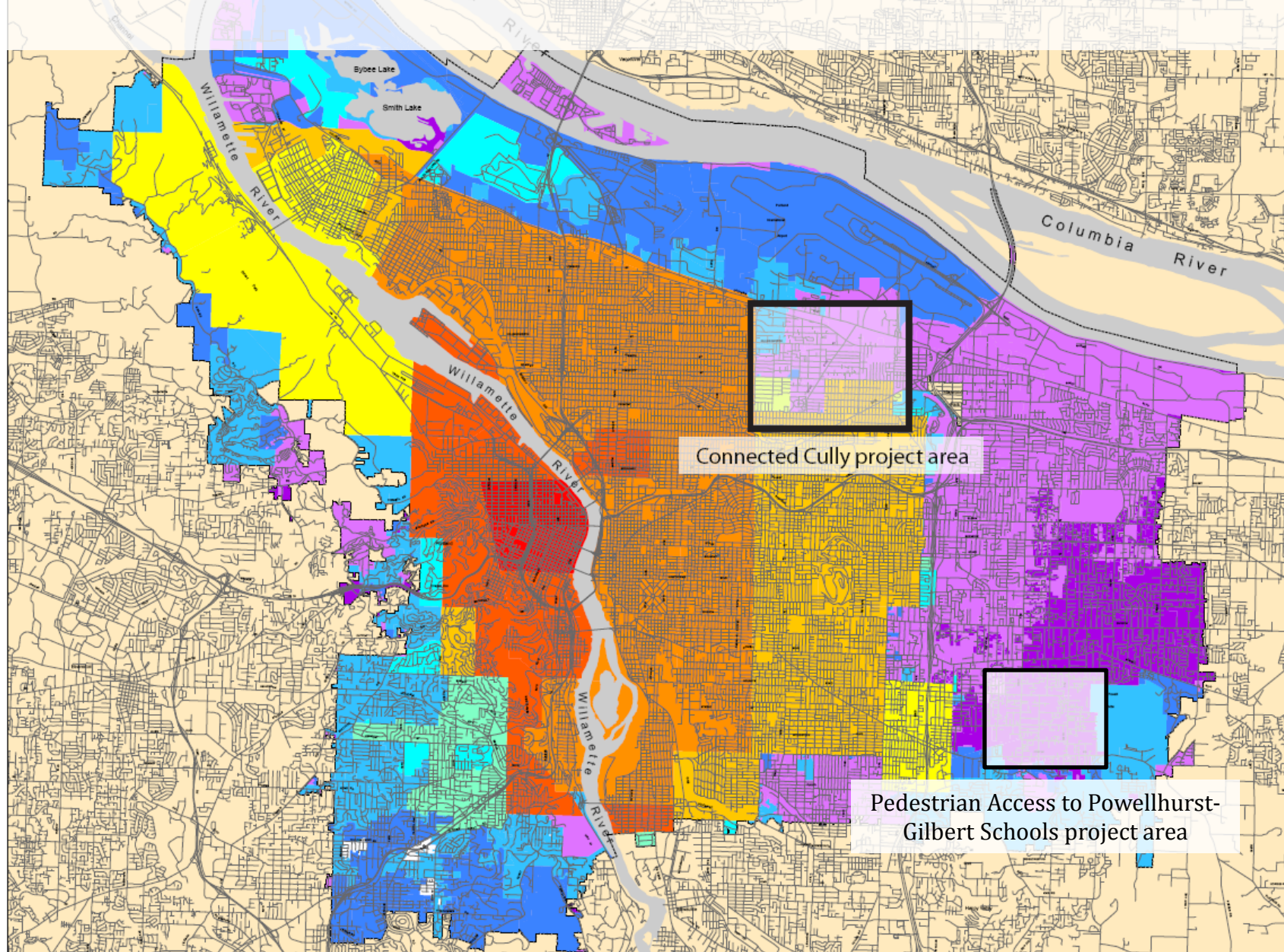
-  Programmed Sidewalk infill Projects
-  Existing Sidewalks on Arterials
-  Missing Sidewalks on Arterials
-  Safe Routes to School participating school

**Safe Routes  
Sidewalk projects**



# What's Next: SRTS as a Network

## Annexations to the City of Portland



**Legend**

- City Boundary
- Area outside of City

**Annexations by Year**

- Pre 1881
- 1881 - 1900
- 1901 - 1910
- 1911 - 1920
- 1921 - 1930
- 1931 - 1940
- 1941 - 1950
- 1951 - 1960
- 1961 - 1970
- 1971 - 1980
- 1981 - 1990
- 1991 - Present
- No Data

N

0 1,000 2,000 4,000 8,000 Feet

**INFORMATION SOURCES:**

Street Centerlines: U.S. Census Bureau TIGER data, registered to location under contract to Metro. Updated by Metro through Jan. 1999.

City Boundary: Copied by Portland Department of Transportation. Updated by POCOT and Bureau of Planning, October 2000. Registered to base data maps.

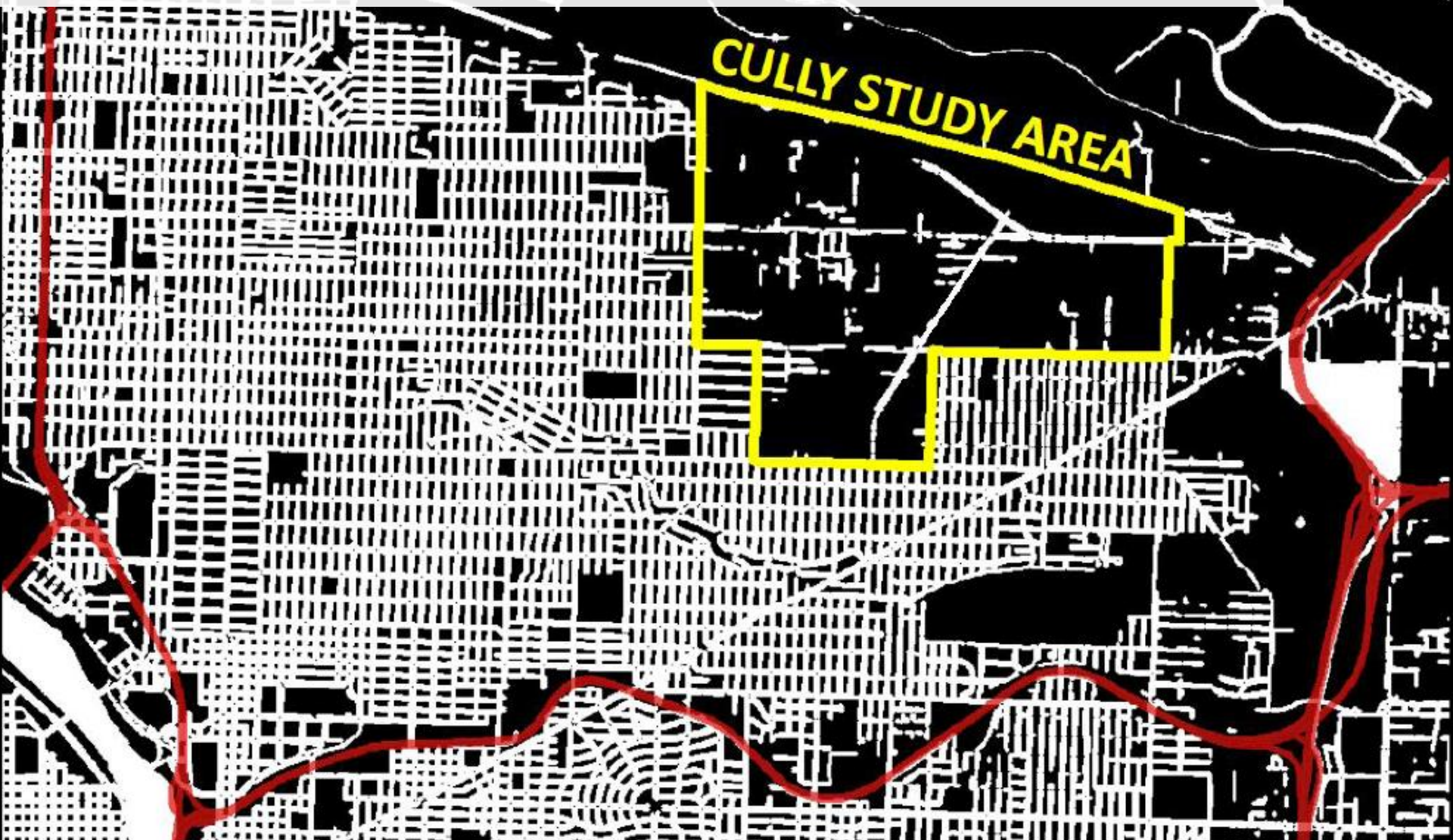
All data compiled from source materials at different scales. For more detail, please refer to the source materials or City of Portland, Bureau of Planning & Sustainability.

The information on this map was derived from digital databases on the City of Portland. Bureau of Planning & Sustainability, GIS.

Information on the map was derived from digital databases on the City of Portland. Bureau of Planning & Sustainability, GIS. The City of Portland cannot accept any responsibility for any omissions, or positional accuracy, and therefore, there are no warranties which accompany this product. However, notification of any errors will be appreciated.



# What's Next: SRTS as a Network



**Sidewalks in Cully vs. adjacent neighborhoods**



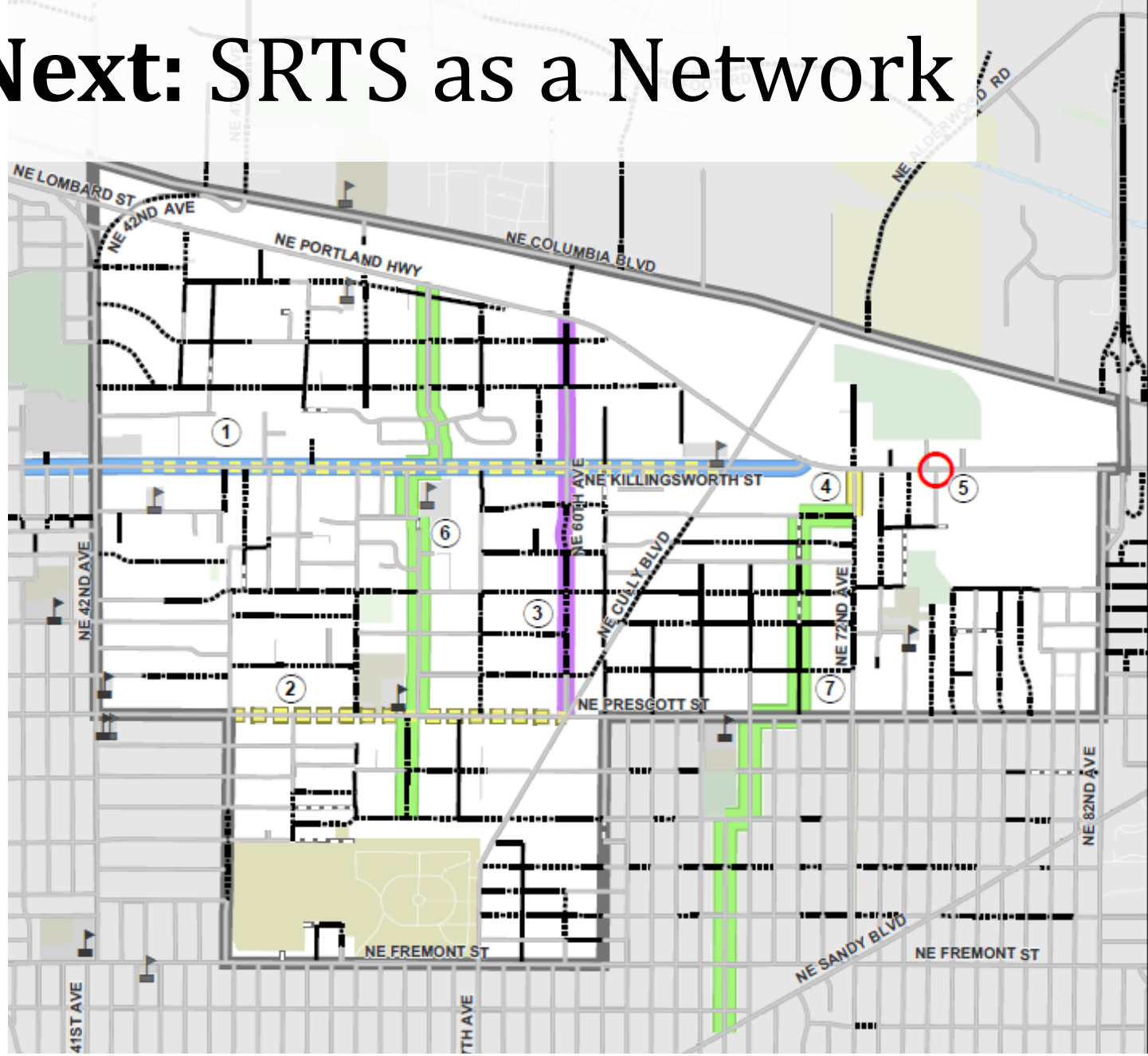
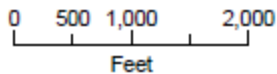
# What's Next: SRTS as a Network

## Proposed Improvements

- Neighborhood greenway
- Sidewalk infill
- Buffered bike lanes
- Walking path
- Multiuse 12 ft sidewalk
- Signalized crossing

## Existing Street Surface

- Paved With Curb
- Paved Without Curb
- Unpaved
- Right-of-Way Only (No Str



Connected Cully — Project Site Map

# Safe Routes on the Inside

SRTS at the Portland Bureau of Transportation



[www.SafeRoutesPortland.org](http://www.SafeRoutesPortland.org)

Gabriel Graff, [gabriel.graff@portlandoregon.gov](mailto:gabriel.graff@portlandoregon.gov), 503-823-5291